

Reprinted on 10-29-2008
Humboldt County, Iowa
 Iowa North Zone (1401)
 Horiz. Datum: NAD83(1996)
 Vert. Datum: NAVD 1988
 US Survey Feet
 2006

Point Name: 38

Designation: 2006 -038 Humboldt County GPS Control Pt.

Northing: 3713167.68sft Easting: 4746682.58sft

Orthometric Height: 1136.93sft Ellipsoid Height: 1042.29sft **Geoid03**

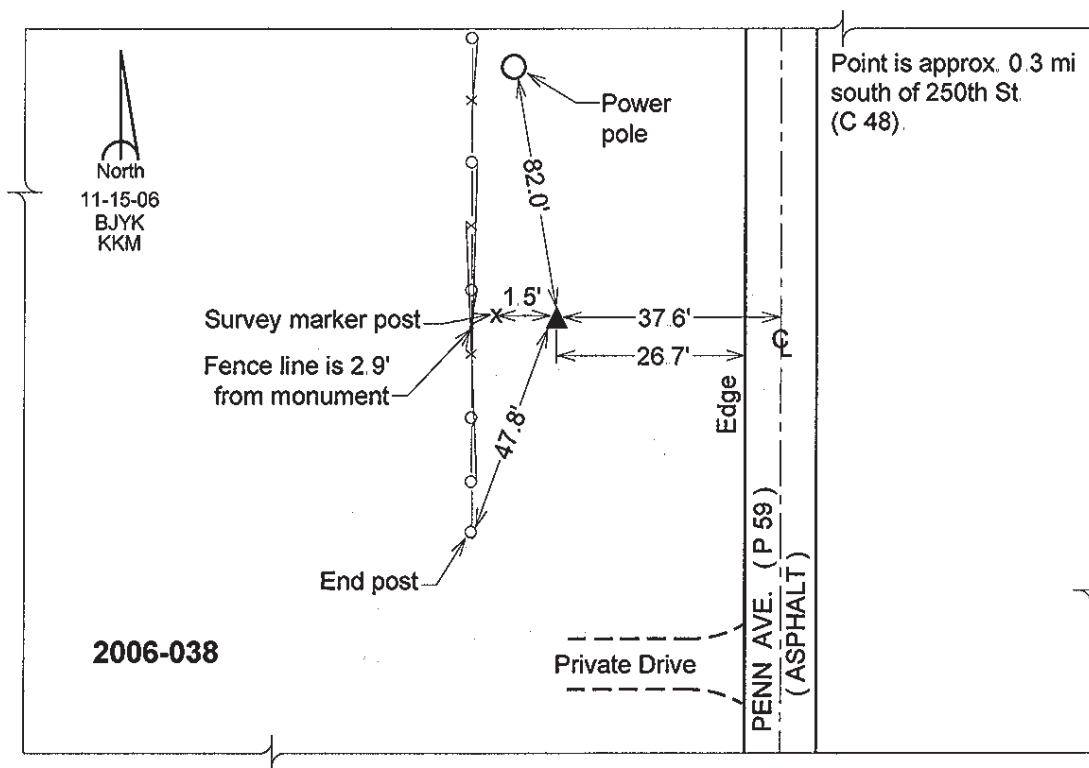
Latitude: 42°41'04.24224"N

Longitude: 94°08'57.35107"W

Mapping Angle: -0°26'24"

Combination Scale Factor: 0.999895680

Monument Type: Berntsen Top Security Rod Monument with a 2-1/2" dia. domed survey cap and permanent magnet encased in a 5" dia. PVC pipe with a NGS style aluminum access cover.



This document was prepared by DCI and GBC for use by Humboldt County, Iowa