

Reprinted on 10-29-2008
Humboldt County, Iowa
Iowa North Zone (1401)
Horiz. Datum: NAD83(1996)
Vert. Datum: NAVD 1988
US Survey Feet
2006

Point Name: **39**

Designation: NGS 2nd order vertical control station. PID: NL0058 Designation: Z 27

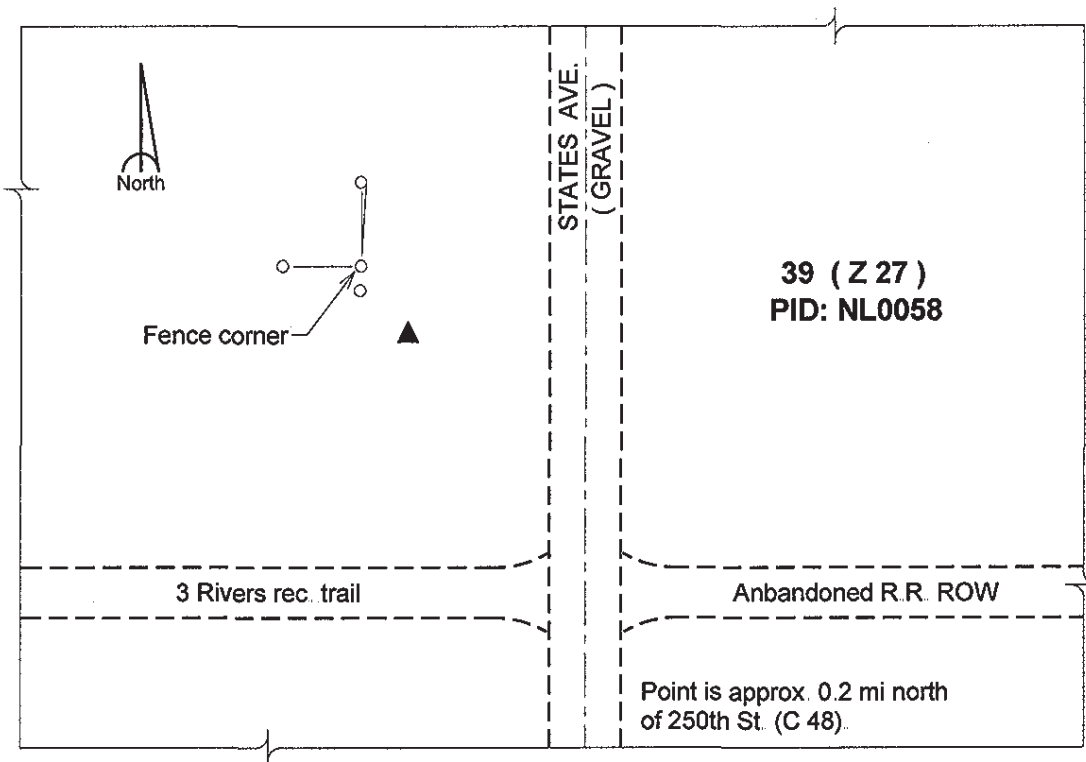
Northing: **3715702.54sft** Easting: **4762582.69sft**

Orthometric Height: **1132.90sft** Ellipsoid Height: **1038.63sft** **Geoid03**

Latitude: **42°41'30.43297"N** Longitude: **94°05'24.70242"W**

Mapping Angle: **-0°24'00"** Combination Scale Factor: **0.999895900**

Monument Type: The station mark is a CGS benchmark disk stamped "Z 27 1934" and set in the top of a concrete monument.



This document was prepared by DCI and GBC for use by Humboldt County, Iowa