

Reprinted on 10-29-2008
Humboldt County, Iowa
 Iowa North Zone (1401)
 Horiz. Datum: NAD83(1996)
 Vert. Datum: NAVD 1988
 US Survey Feet
2006

Point Name: 4

Designation: 2006 -004 Humboldt County GPS Control Pt.

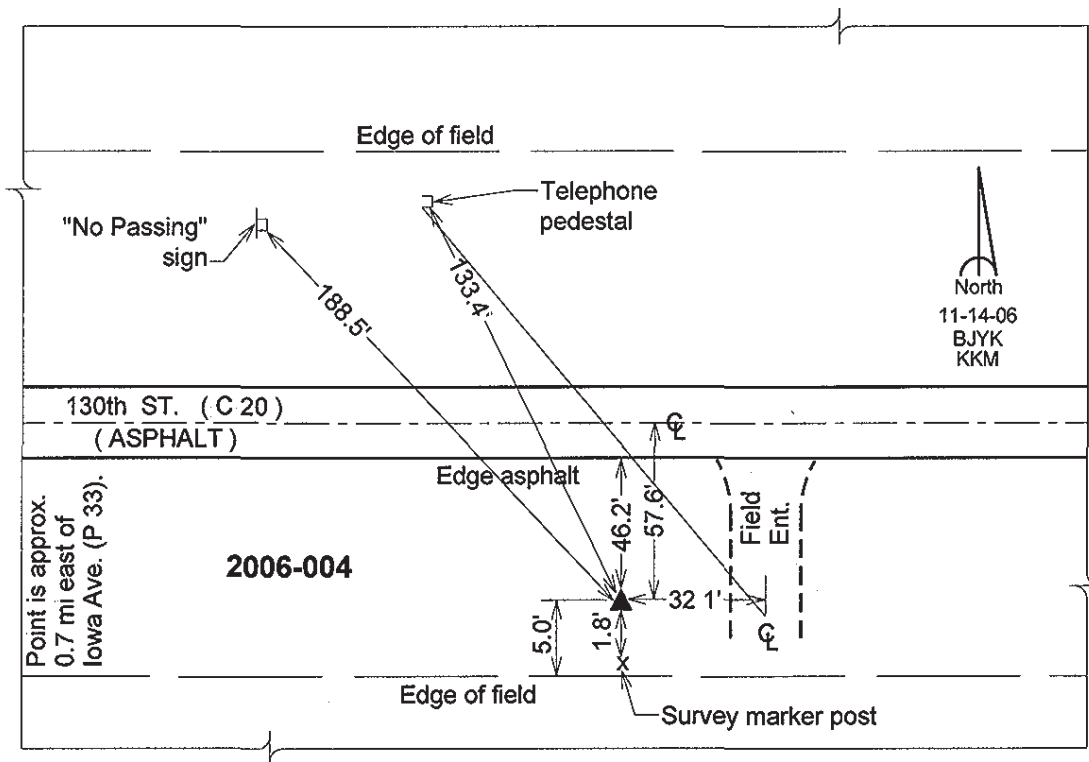
Northing: 3778453.15sft Easting: 4714300.02sft

Orthometric Height: 1134.89sft Ellipsoid Height: 1039.16sft **Geoid03**

Latitude: 42°51'46.42632"N Longitude: 94°16'18.89297"W

Mapping Angle: -0°31'23" Combination Scale Factor: 0.999901580

Monument Type: Berntsen Top Security Rod Monument with a 2-1/2" dia. domed survey cap and permanent magnet encased in a 5" dia. PVC pipe with a NGS style aluminum access cover.



This document was prepared by DCI and GBC for use by Humboldt County, Iowa