

Reprinted on 10-29-2008
Humboldt County, Iowa
Iowa North Zone (1401)
Horiz. Datum: NAD83(1996)
Vert. Datum: NAVD 1988
US Survey Feet
2006

Point Name: **40**

Designation: CBN horizontal and 2nd order vertical. PID: NL0062 Designation: B 28

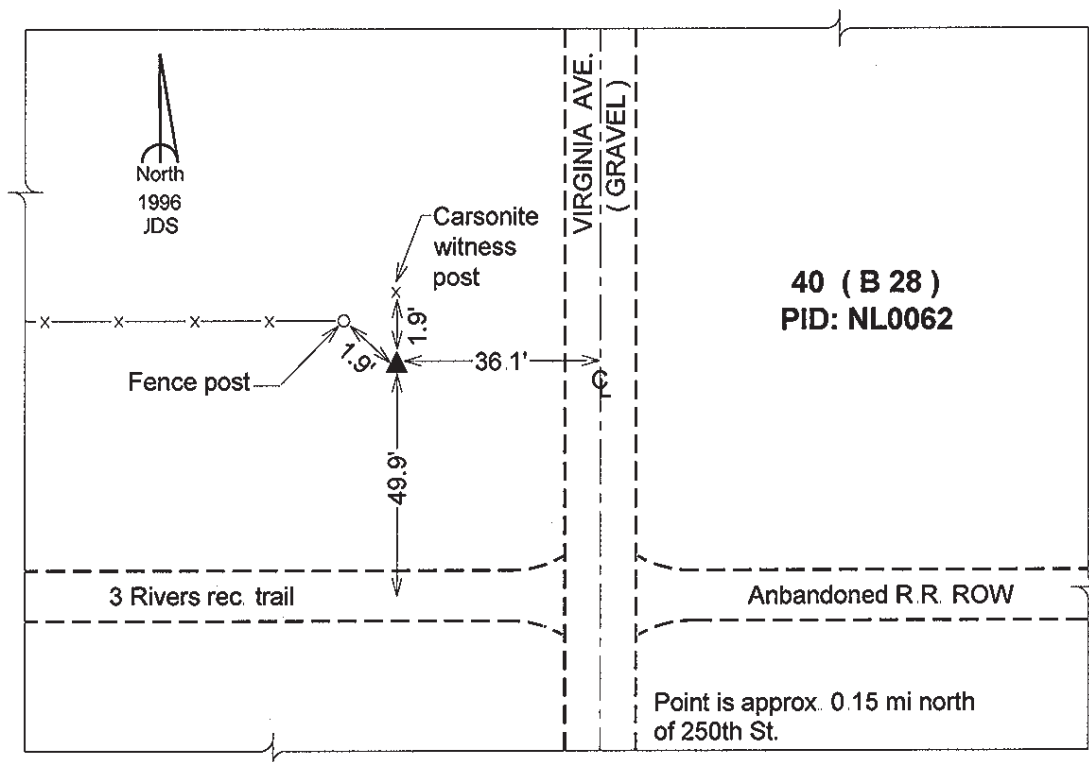
Northing: **3715171.30sft** Easting: **4778746.17sft**

Orthometric Height: **1135.37sft** Ellipsoid Height: **1041.79sft** **Geoid03**

Latitude: **42°41'26.24323"N** Longitude: **94°01'48.21986"W**

Mapping Angle: **-0°21'33"** Combination Scale Factor: **0.999895740**

Monument Type: The station mark is a USCGS benchmark disk stamped "B 28 1934" and set in the top of a square concrete monument.



This document was prepared by DCI and GBC for use by Humboldt County, Iowa