

Reprinted on 10-29-2008
Humboldt County, Iowa
Iowa North Zone (1401)
Horiz. Datum: NAD83(1996)
Vert. Datum: NAVD 1988
US Survey Feet
2008

Point Name: **43** (Replaces destroyed point 2006-036)

Designation: 2008 -043 Humboldt County GPS Control Pt.

Northing: **3717162.87**sft Easting: **4715420.51**sft

Orthometric Height: **1141.13**sft Ellipsoid Height: **1045.87**sft **Geoid03**

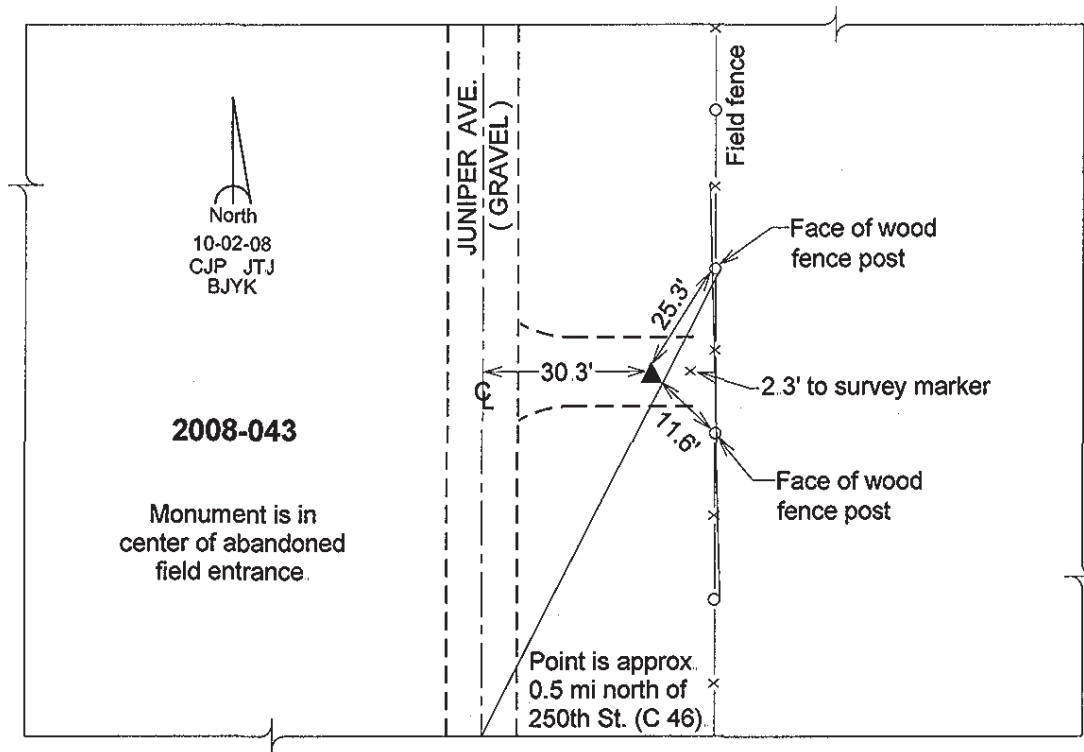
Latitude: **42°41'41.12203"N**

Longitude: **94°15'56.39431"W**

Mapping Angle: **-0°31'08"**

Combination Scale Factor: **0.99989558**

Monument Type: Berntsen Top Security Rod Monument with a 2-1/2" dia. domed survey cap and permanent magnet encased in a 5" dia. PVC pipe with a NGS style aluminum access cover.



This document was prepared by DCI and GBC for use by Humboldt County, Iowa.