

Reprinted on 10-29-2008
Humboldt County, Iowa
Iowa North Zone (1401)
Horiz. Datum: NAD83(1996)
Vert. Datum: NAVD 1988
US Survey Feet
2008

Point Name: **44** (Replaces destroyed point 2006-030)

Designation: 2008 -044 Humboldt County GPS Control Pt.

Northing: **3731906.97**sft Easting: **4699620.36**sft

Orthometric Height: **1151.71**sft Ellipsoid Height: **1056.21**sft **Geoid03**

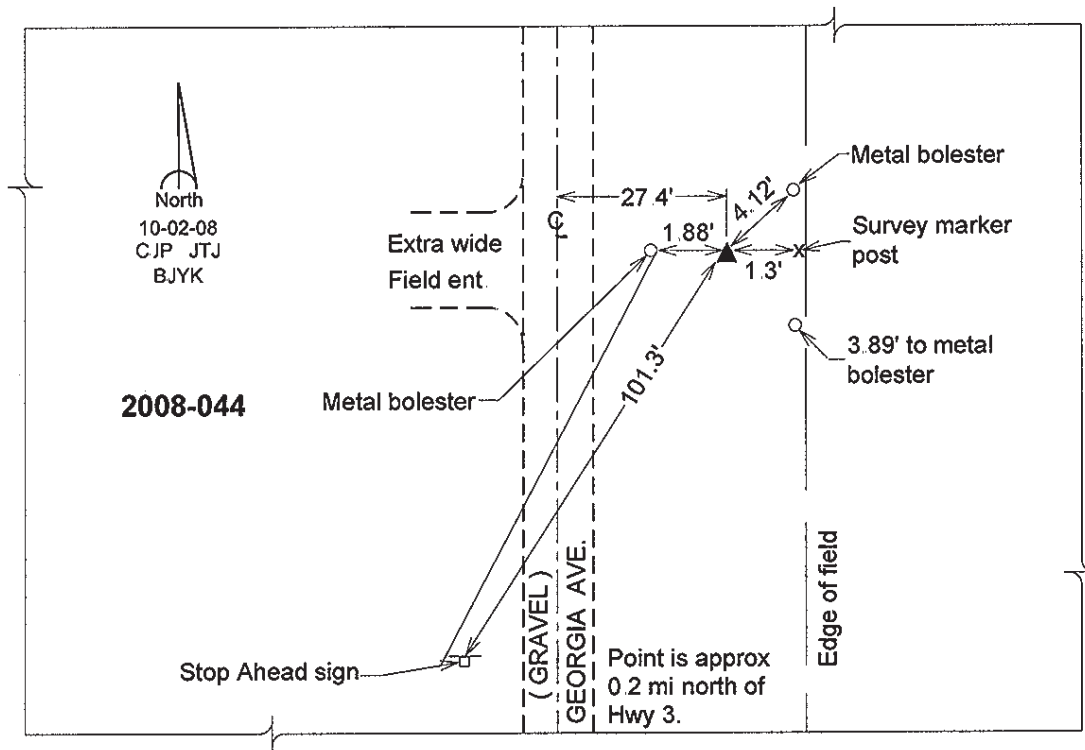
Latitude: **42°44'05.29254"N**

Longitude: **94°19'29.89799"W**

Mapping Angle: **-0°33'33"**

Combination Scale Factor: **0.99989566**

Monument Type: Berntsen Top Security Rod Monument with a 2-1/2" dia. domed survey cap and permanent magnet encased in a 5" dia. PVC pipe with a NGS style aluminum access cover.



This document was prepared by DCI and GBC for use by Humboldt County, Iowa