

Reprinted on 10-29-2008
Humboldt County, Iowa
Iowa North Zone (1401)
Horiz. Datum: NAD83(1996)
Vert. Datum: NAVD 1988
US Survey Feet
2006

Point Name: 5

Designation: 2006 -005 Humboldt County GPS Control Pt.

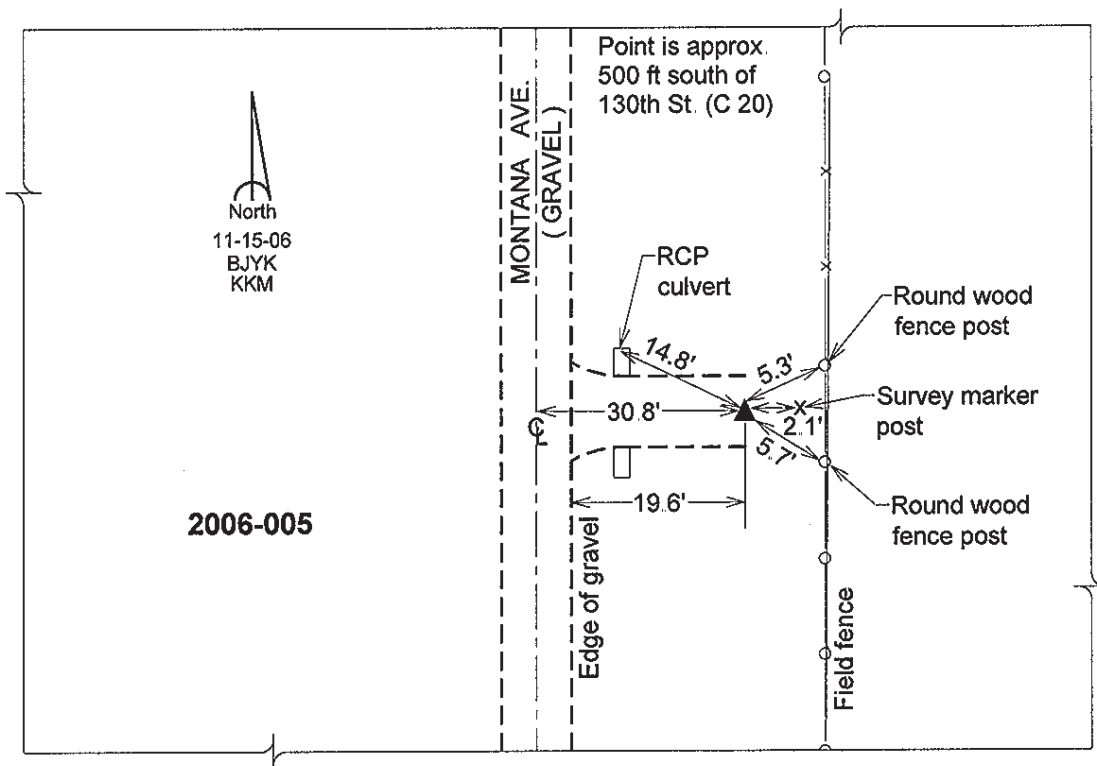
Northing: 3777962.47sft Easting: 4731579.93sft

Orthometric Height: 1126.77sft Ellipsoid Height: 1030.79sft Geoid03

Latitude: 42°51'43.07303"N Longitude: 94°12'26.81710"W

Mapping Angle: -0°28'46" Combination Scale Factor: 0.999901930

Monument Type: Berntsen Top Security Rod Monument with a 2-1/2" dia. domed survey cap and permanent magnet encased in a 5" dia. PVC pipe with a NGS style aluminum access cover.



This document was prepared by DCI and GBC for use by Humboldt County, Iowa