

Reprinted on 10-29-2008
Humboldt County, Iowa
Iowa North Zone (1401)
Horiz. Datum: NAD83(1996)
Vert. Datum: NAVD 1988
US Survey Feet
2006

Point Name: 6

Designation: 2006 -006 Humboldt County GPS Control Pt.

Northing: 3778327.51sft Easting: 4747134.05sft

Orthometric Height: 1150.72sft Ellipsoid Height: 1054.66sft **Geoid03**

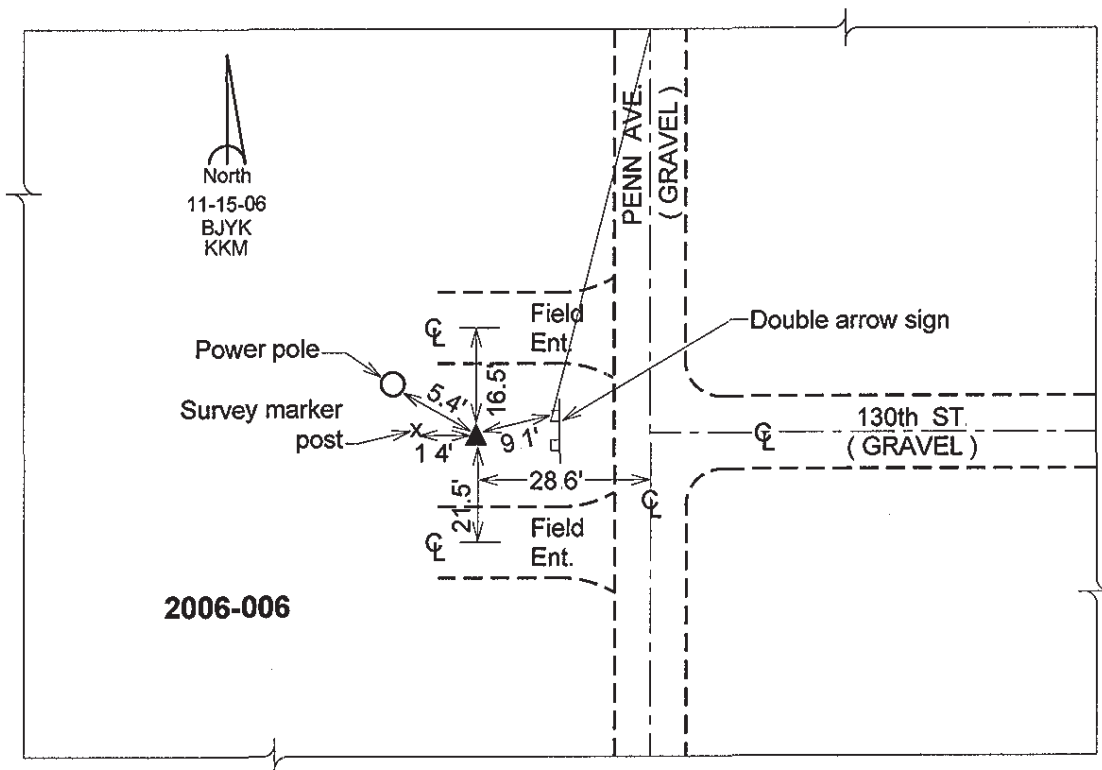
Latitude: 42°51'47.91172"N

Longitude: 94°08'58.00861"W

Mapping Angle: -0°26'25"

Combination Scale Factor: 0.999900870

Monument Type: Berntsen Top Security Rod Monument with a 2-1/2" dia. domed survey cap and permanent magnet encased in a 5" dia. PVC pipe with a NGS style aluminum access cover



This document was prepared by DCI and GBC for use by Humboldt County, Iowa