

Reprinted on 10-29-2008  
Humboldt County, Iowa  
Iowa North Zone (1401)  
Horiz. Datum: NAD83(1996)  
Vert. Datum: NAVD 1988  
US Survey Feet  
2006

Point Name: 6001

Designation: GPS No 6001 Webster County, Iowa (set by Deni Associates in 1996)

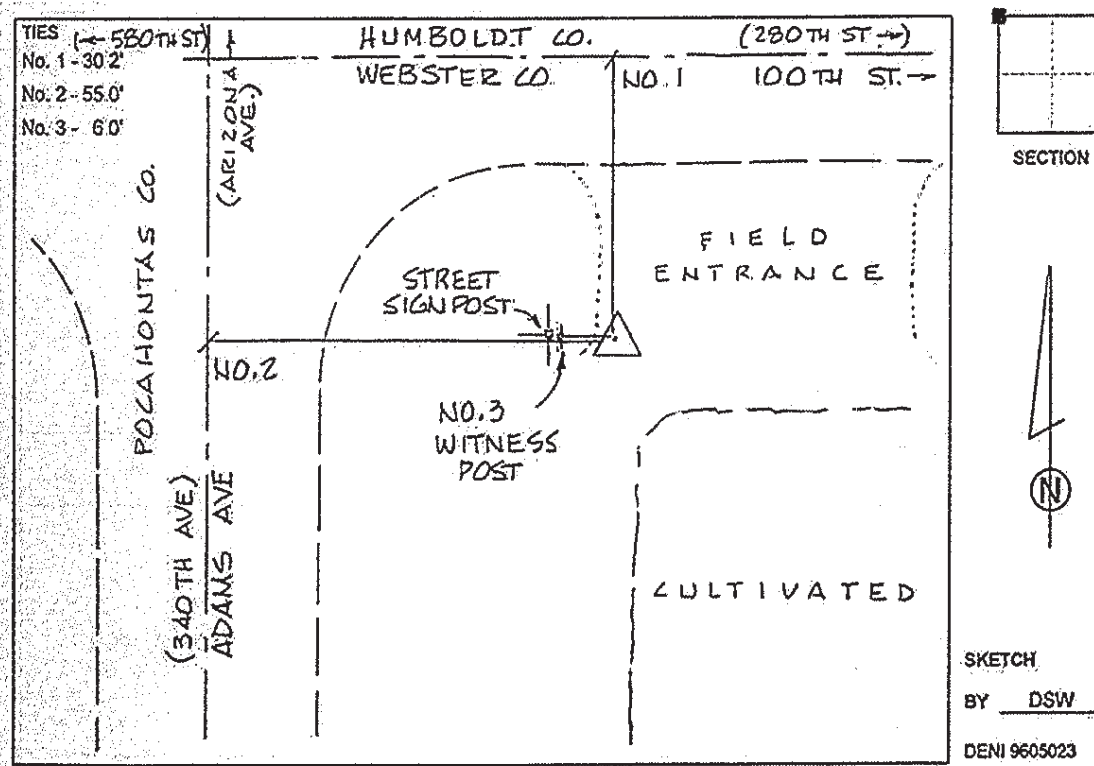
Northing: 3699534.50sft Easting: 4667577.62sft

Orthometric Height: 1212.20sft Ellipsoid Height: 1116.78sft Geoid03

Latitude: 42°38'42.21714"N Longitude: 94°26'34.40801"W

Mapping Angle: -0°38'21" Combination Scale Factor: 0.999892160

Monument Type: Berntsen top security rod with 3-1/4" aluminum cap set inside access cover.



This document was prepared by DCI and GBC for use by Humboldt County, Iowa