

Reprinted on 10-29-2008  
Humboldt County, Iowa  
Iowa North Zone (1401)  
Horiz. Datum: NAD83(1996)  
Vert. Datum: NAVD 1988  
US Survey Feet  
2006

Point Name: 6006

Designation: GPS No. 6006 Webster County, Iowa (set by Deni Associates in 1996)

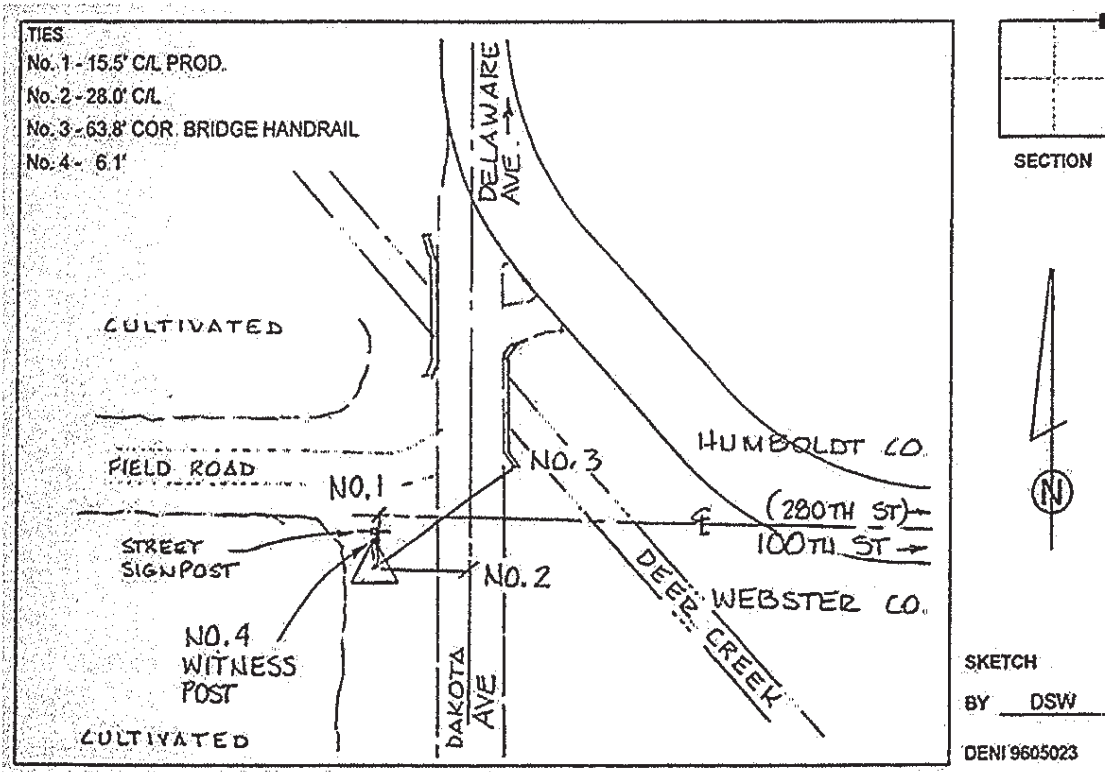
Northing: 3699381.69sft Easting: 4683525.79sft

Orthometric Height: 1166.46sft Ellipsoid Height: 1071.12sft Geoid03

Latitude: 42°38'42.40956"N Longitude: 94°23'00.99912"W

Mapping Angle: -0°35'56" Combination Scale Factor: 0.999894340

Monument Type: Berntsen top security rod with 3-1/4" aluminum cap set inside access cover.



This document was prepared by DCI and GBC for use by Humboldt County, Iowa