

Reprinted on 10-29-2008
Humboldt County, Iowa
Iowa North Zone (1401)
Horiz. Datum: NAD83(1996)
Vert. Datum: NAVD 1988
US Survey Feet
2006

Point Name: 6007

Designation: GPS No. 6007 Webster County, Iowa (set by Deni Associates in 1996)

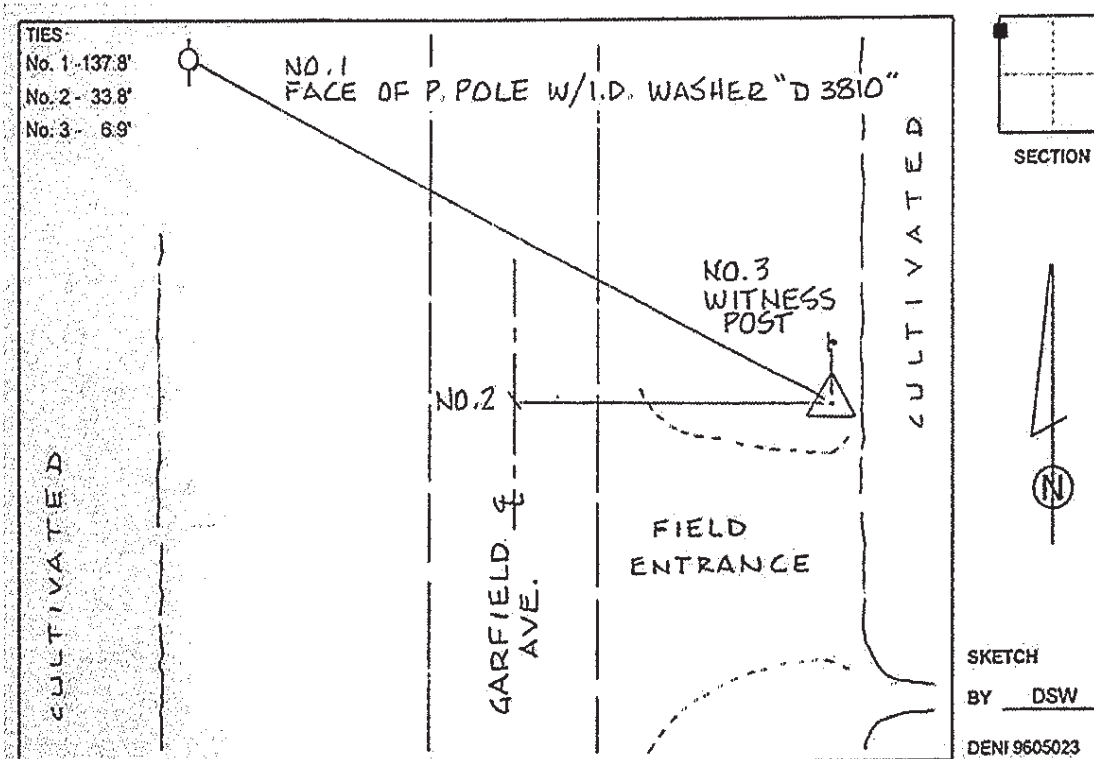
Northing: 3698341.79sft Easting: 4699382.75sft

Orthometric Height: 1172.20sft Ellipsoid Height: 1077.06sft Geoid03

Latitude: 42°38'33.72017"N Longitude: 94°19'28.69458"W

Mapping Angle: -0°33'32" Combination Scale Factor: 0.999894080

Monument Type: Berntsen top security rod with 3-1/4" aluminum cap set inside access cover.



This document was prepared by DCI and GBC for use by Humboldt County, Iowa