

Reprinted on 10-29-2008  
Humboldt County, Iowa  
Iowa North Zone (1401)  
Horiz. Datum: NAD83(1996)  
Vert. Datum: NAVD 1988  
US Survey Feet  
2006

Point Name: 6012

Designation: GPS No. 6012 Webster County, Iowa (set by Deni Associates in 1996)

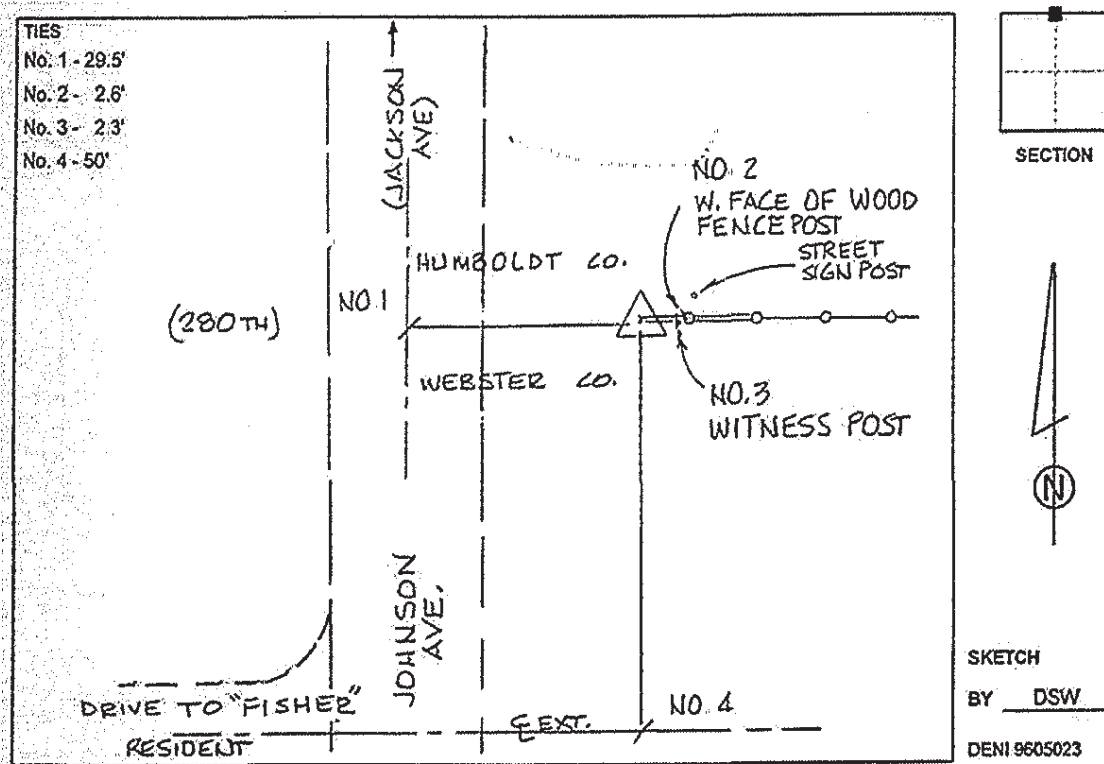
Northing: 3698973.84sft Easting: 4717831.92sft

Orthometric Height: 1137.64sft Ellipsoid Height: 1042.81sft Geoid03

Latitude: 42°38'41.66732"N Longitude: 94°15'21.92487"W

Mapping Angle: -0°30'45" Combination Scale Factor: 0.999895690

Monument Type: Berntsen top security rod with 3-1/4" aluminum cap set inside access cover.



This document was prepared by DCI and GBC for use by Humboldt County, Iowa