

Reprinted on 10-29-2008
Humboldt County, Iowa
 Iowa North Zone (1401)
 Horiz Datum: NAD83(1996)
 Vert Datum: NAVD 1988
 US Survey Feet
2006

Point Name: **6013**

Designation: GPS No. 6013 Webster County, Iowa (set by Deni Associates in 1996)

Northing: **3698751.53sft** Easting: **4734634.26sft**

Orthometric Height: **1043.83sft** Ellipsoid Height: **949.44sft** **Geoid03**

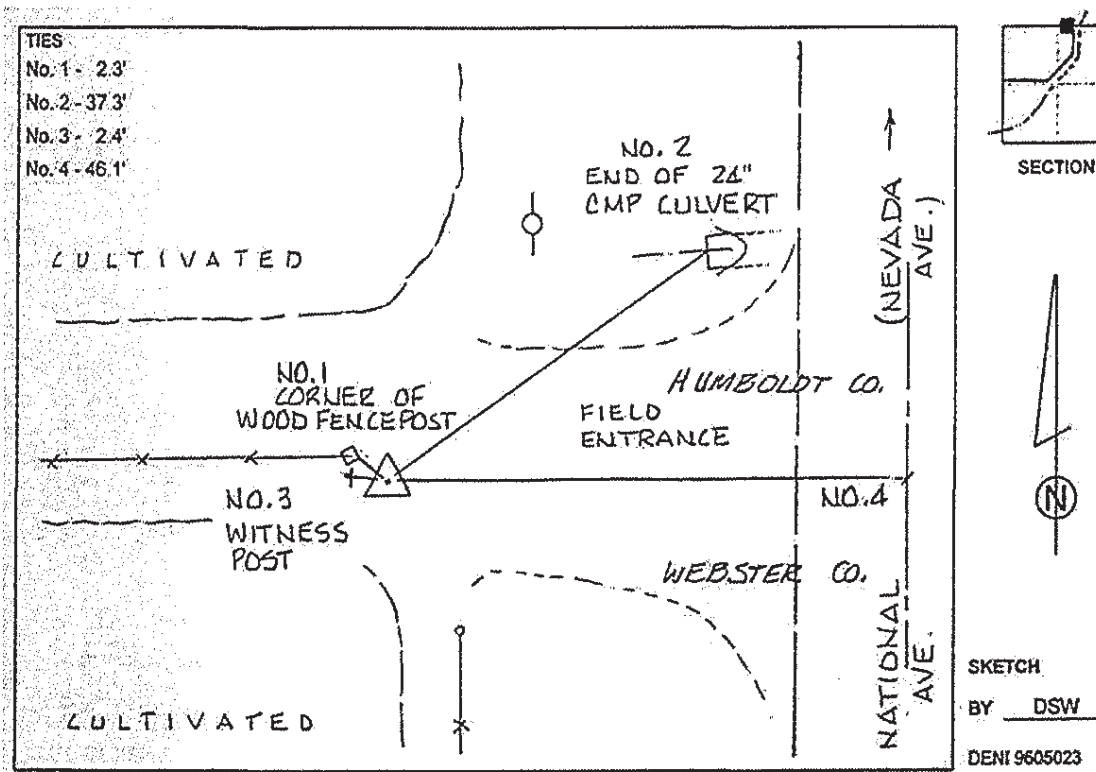
Latitude: **42°38'40.89449"N**

Longitude: **94°11'37.07993"W**

Mapping Angle: **-0°28'12"**

Combination Scale Factor: **0.999900150**

Monument Type: Berntsen top security rod with 3-1/4" aluminum cap set inside access cover.



This document was prepared by DCI and GBC for use by Humboldt County, Iowa