

Reprinted on 10-29-2008
Humboldt County, Iowa
Iowa North Zone (1401)
Horiz. Datum: NAD83(1996)
Vert. Datum: NAVD 1988
US Survey Feet
2006

Point Name: 6018

Designation: GPS No. 6018 Webster County, Iowa (set by Deni Associates in 1996)

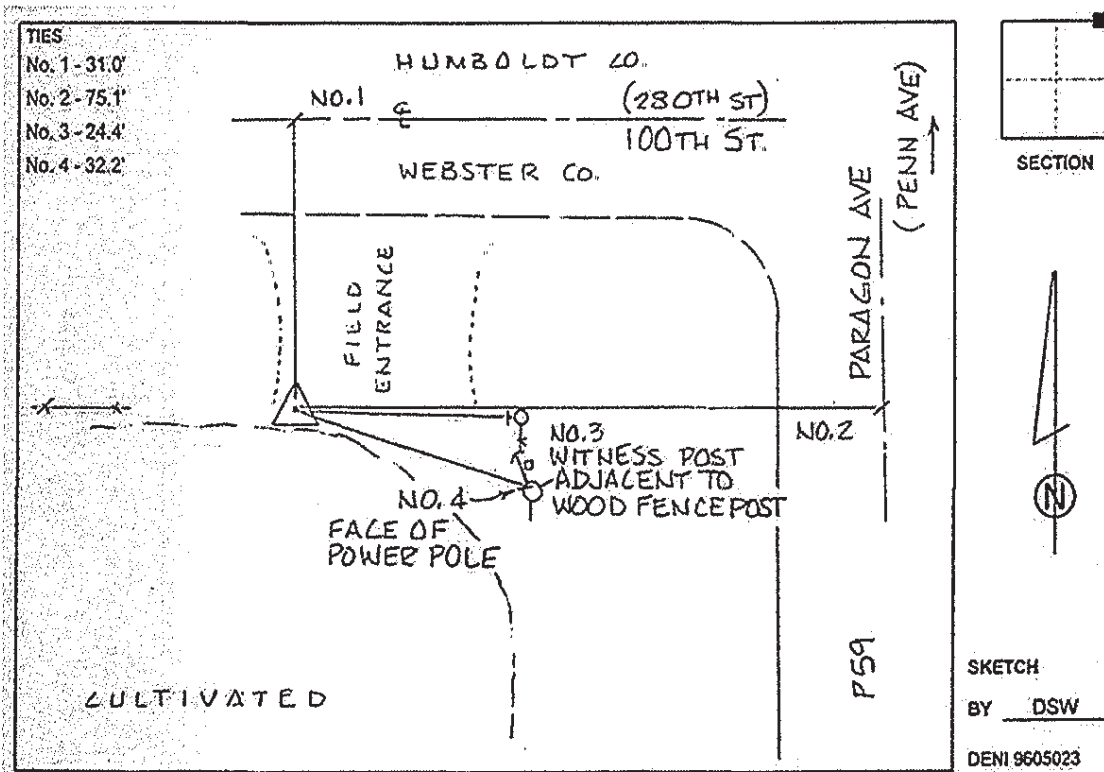
Northing: 3698654.55sft Easting: 4746597.90sft

Orthometric Height: 1130.51sft Ellipsoid Height: 1036.47sft Geoid03

Latitude: 42°38'40.87509"N Longitude: 94°08'56.99263"W

Mapping Angle: -0°26'24" Combination Scale Factor: 0.999896000

Monument Type: Berntsen top security rod with 3-1/4" aluminum cap set inside access cover.



This document was prepared by DCI and GBC for use by Humboldt County, Iowa.