

Reprinted on 10-29-2008  
**Humboldt County, Iowa**  
 Iowa North Zone (1401)  
 Horiz. Datum: NAD83(1996)  
 Vert. Datum: NAVD 1988  
 US Survey Feet  
**2006**

Point Name: **6019**

**Designation:** GPS No. 6019 Webster County, Iowa (set by Deni Associates in 1996)

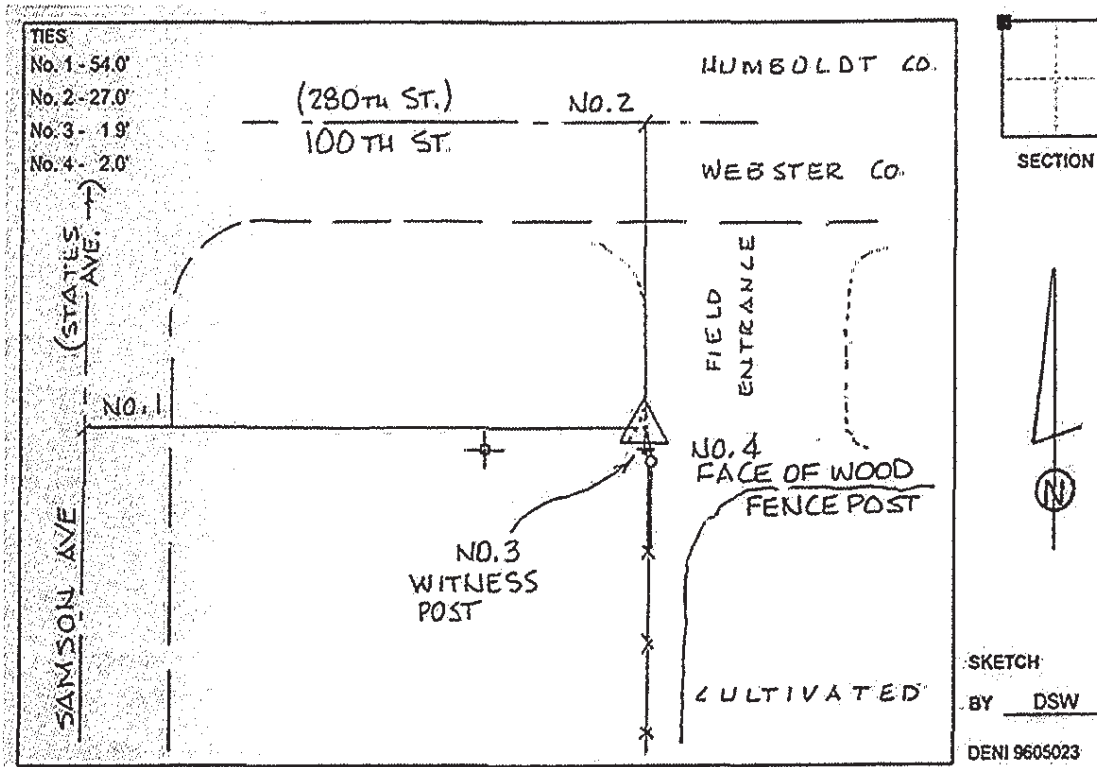
Northing: **3698533.13sft** Easting: **4762540.28sft**

Orthometric Height: **1145.72sft** Ellipsoid Height: **1052.34sft** **Geoid03**

Latitude: **42°38'40.82979"N** Longitude: **94°05'23.66605"W**

Mapping Angle: **-0°23'59"** Combination Scale Factor: **0.999895240**

**Monument Type:** Berntsen top security rod with 3-1/4" aluminum cap set inside access cover.



*This document was prepared by DCI and GBC for use by Humboldt County, Iowa.*