

Reprinted on 10-29-2008
Humboldt County, Iowa
 Iowa North Zone (1401)
 Horiz. Datum: NAD83(1996)
 Vert. Datum: NAVD 1988
 US Survey Feet
2006

Point Name: **6024**

Designation: GPS No. 6024 Webster County, Iowa (set by Deni Associates in 1996)

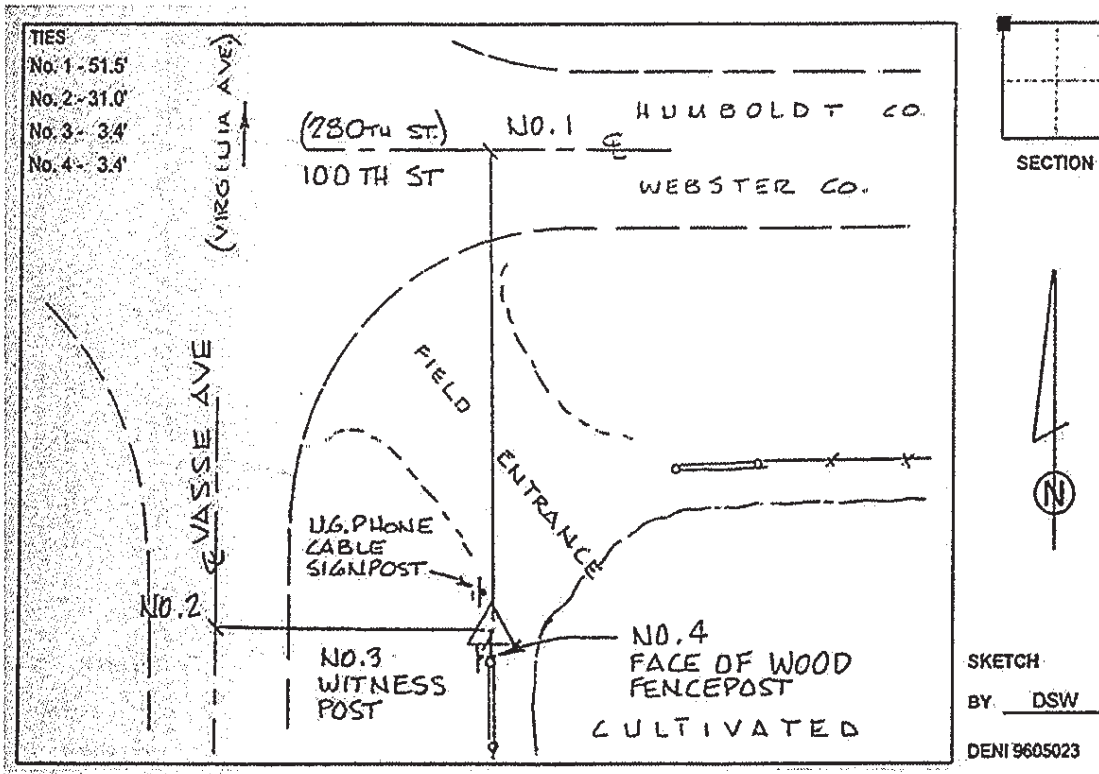
Northing: **3698394.28sft** Easting: **4778597.34sft**

Orthometric Height: **1141.95sft** Ellipsoid Height: **1049.34sft** Geoid03

Latitude: **42°38'40.50904"N** Longitude: **94°01'48.80373"W**

Mapping Angle: **-0°21'34"** Combination Scale Factor: **0.999895380**

Monument Type: Berntsen top security rod with 3-1/4" aluminum cap set inside access cover.



This document was prepared by DCI and GBC for use by Humboldt County, Iowa