

Reprinted on 10-29-2008
Humboldt County, Iowa
 Iowa North Zone (1401)
 Horiz. Datum: NAD83(1996)
 Vert. Datum: NAVD 1988
 US Survey Feet
2006

Point Name: **6025**

Designation: GPS No. 6025 Webster County, Iowa (set by Deni Associates in 1996)

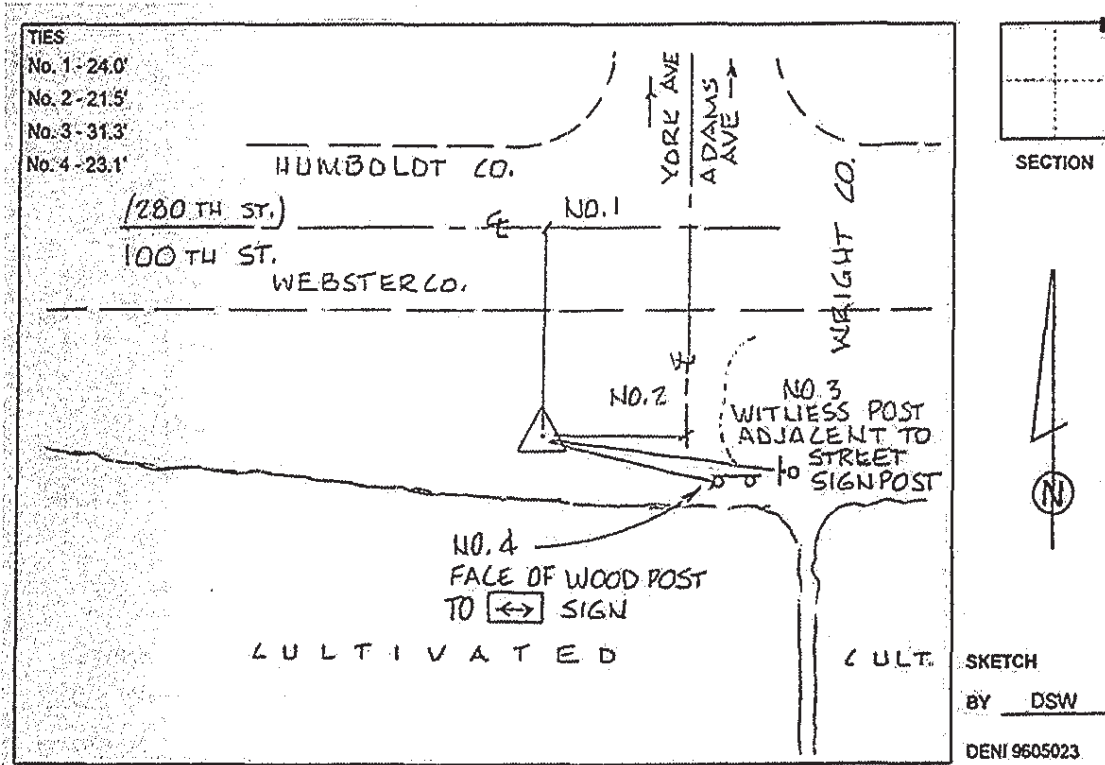
Northing: **3698315.16sft** Easting: **4794415.01sft**

Orthometric Height: **1131.09sft** Ellipsoid Height: **1039.32sft** **Geoid03**

Latitude: **42°38'40.65314"N** Longitude: **93°58'17.14974"W**

Mapping Angle: **-0°19'10"** Combination Scale Factor: **0.999895860**

Monument Type: Berntsen top security rod with 3-1/4" aluminum cap set inside access cover.



This document was prepared by DCI and GBC for use by Humboldt County, Iowa