

Reprinted on 10-29-2008  
Humboldt County, Iowa  
Iowa North Zone (1401)  
Horiz. Datum: NAD83(1996)  
Vert. Datum: NAVD 1988  
US Survey Feet  
2006

Point Name: 608

Designation: 2005-608 Kossuth Co GPS Control Pt. (set by DCI in 2005)

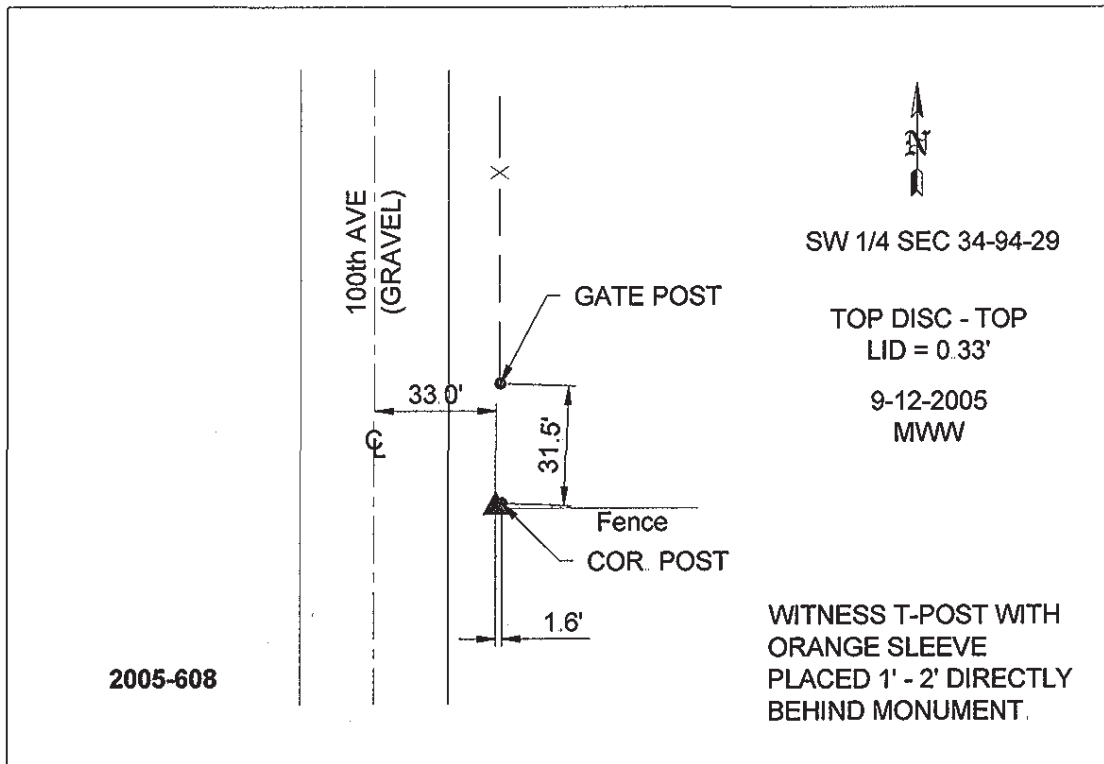
Northing: 3794929.67sft Easting: 4715951.51sft

Orthometric Height: 1136.15sft Ellipsoid Height: 1040.50sft Geoid03

Latitude: 42°54'29.32038"N Longitude: 94°15'58.72361"W

Mapping Angle: -0°31'10" Combination Scale Factor: 0.999904510

**Monument Type:** Berntsen Top Security Rod Monument with a 2-1/2" dia. domed survey cap and permanent magnet encased in a 5" dia. PVC pipe with a NGS style aluminum access cover.



This document was prepared by DCI and GBC for use by Humboldt County, Iowa