

Reprinted on 10-29-2008
Humboldt County, Iowa
Iowa North Zone (1401)
Horiz. Datum: NAD83(1996)
Vert. Datum: NAVD 1988
US Survey Feet
2006

Point Name: 609

Designation: 2005-609 Kossuth Co GPS Control Pt. (set by DCI in 2005)

Northing: 3796121.41sft Easting: 4731708.59sft

Orthometric Height: 1095.25sft Ellipsoid Height: 999.32sft Geoid03

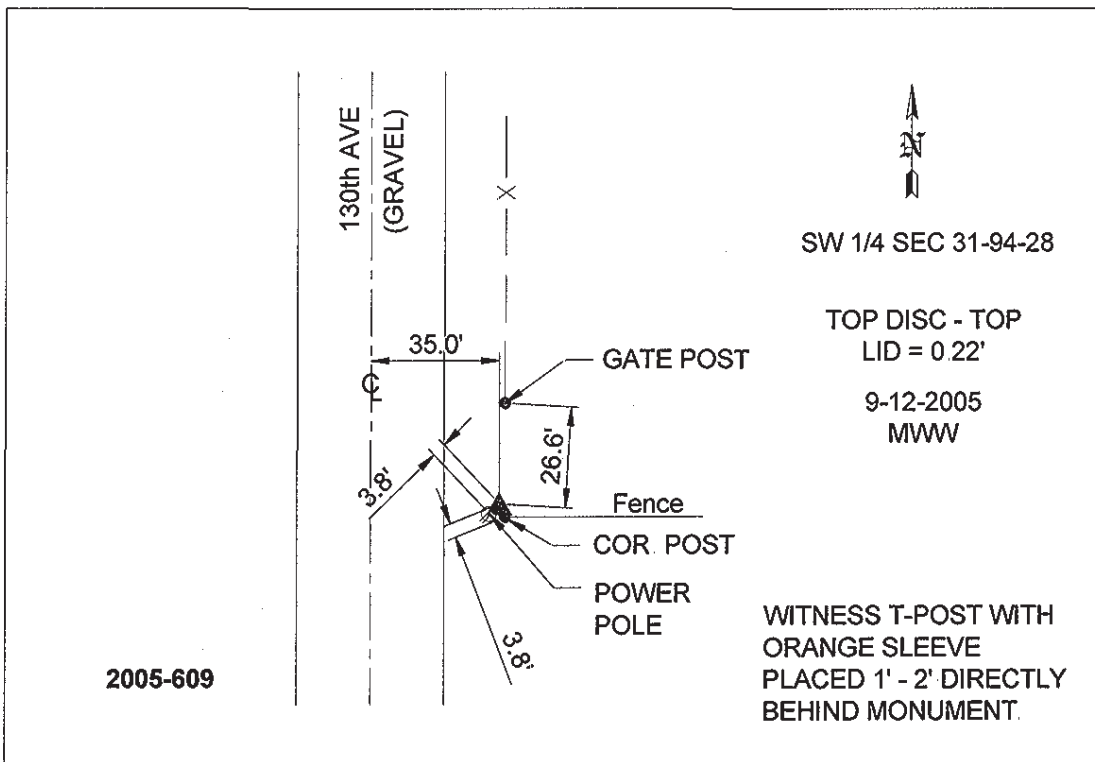
Latitude: 42°54'42.44842"N

Longitude: 94°12'27.13024"W

Mapping Angle: -0°28'46"

Combination Scale Factor: 0.999906750

Monument Type: Berntsen Top Security Rod Monument with a 2-1/2" dia. domed survey cap and permanent magnet encased in a 5" dia. PVC pipe with a NGS style aluminum access cover.



This document was prepared by DCI and GBC for use by Humboldt County, Iowa