

Reprinted on 10-29-2008
Humboldt County, Iowa
Iowa North Zone (1401)
Horiz. Datum: NAD83(1996)
Vert. Datum: NAVD 1988
US Survey Feet
2006

Point Name: 612

Designation: 2005-612 Kossuth Co GPS Control Pt. (set by DCI in 2005)

Northing: 3794361.44sft Easting: 4779678.64sft

Orthometric Height: 1155.75sft Ellipsoid Height: 1059.63sft Geoid03

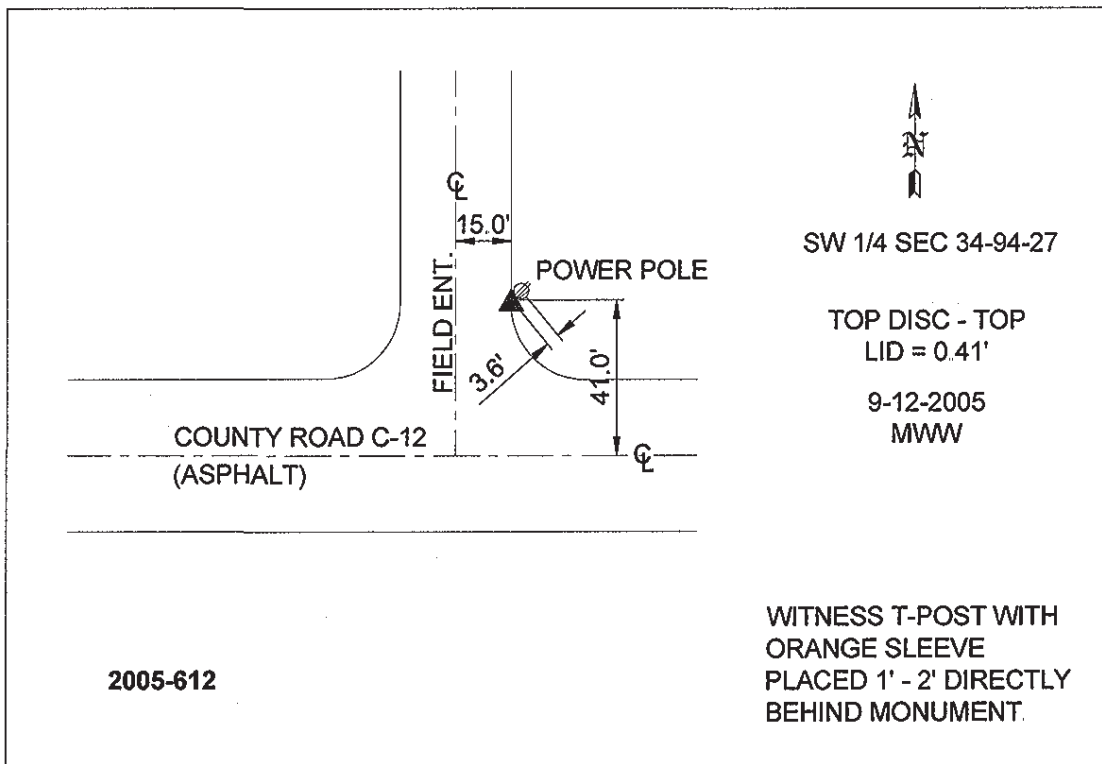
Latitude: 42°54'28.52803"N

Longitude: 94°01'42.36209"W

Mapping Angle: -0°21'29"

Combination Scale Factor: 0.999903590

Monument Type: Berntsen Top Security Rod Monument with a 2-1/2" dia. domed survey cap and permanent magnet encased in a 5" dia. PVC pipe with a NGS style aluminum access cover.



This document was prepared by DCI and GBC for use by Humboldt County, Iowa.