

Reprinted on 10-29-2008
Humboldt County, Iowa
Iowa North Zone (1401)
Horiz. Datum: NAD83(1996)
Vert. Datum: NAVD 1988
US Survey Feet
2006

Point Name: 7

Designation: 2006 -007 Humboldt County GPS Control Pt.

Northing: 3778202.40sft Easting: 4765802.15sft

Orthometric Height: 1135.18sft Ellipsoid Height: 1039.16sft **Geoid03**

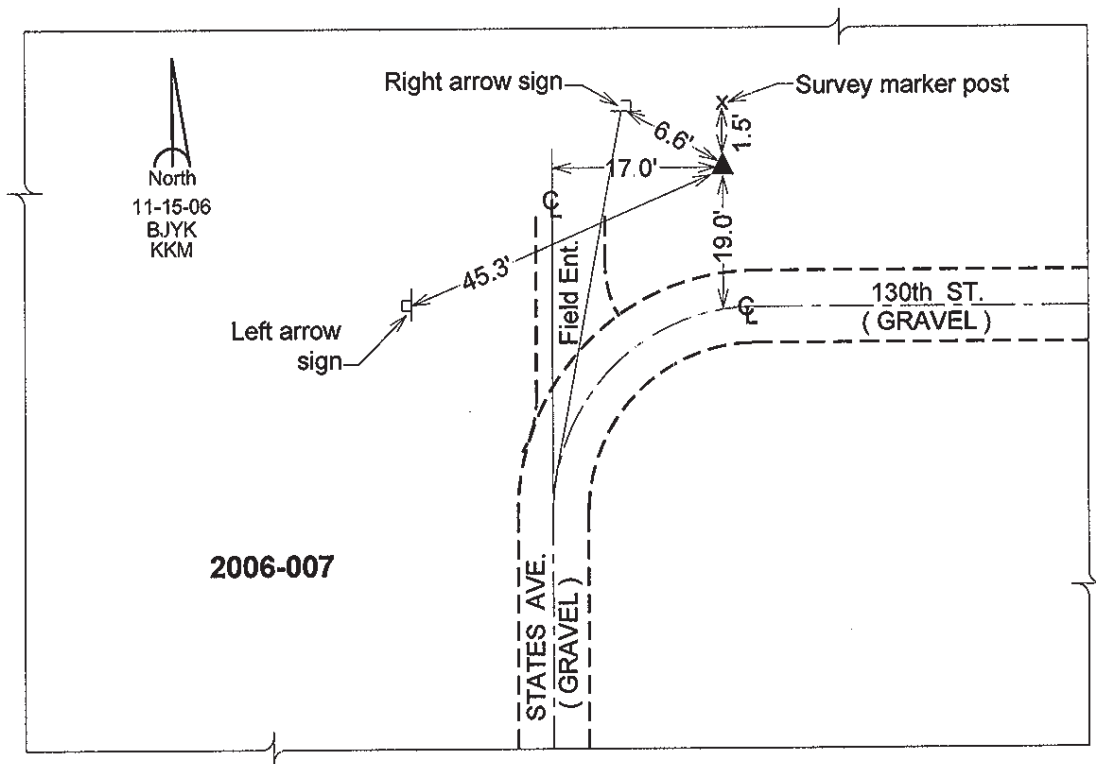
Latitude: 42°51'48.01659"N

Longitude: 94°04'47.33231"W

Mapping Angle: -0°23'35"

Combination Scale Factor: 0.999901610

Monument Type: Berntsen Top Security Rod Monument with a 2-1/2" dia. domed survey cap and permanent magnet encased in a 5" dia. PVC pipe with a NGS style aluminum access cover.



This document was prepared by DCI and GBC for use by Humboldt County, Iowa