

Reprinted on 10-29-2008
Humboldt County, Iowa
 Iowa North Zone (1401)
 Horiz. Datum: NAD83(1996)
 Vert. Datum: NAVD 1988
 US Survey Feet
 2006

Point Name: 8

Designation: 2006 -008 Humboldt County GPS Control Pt.

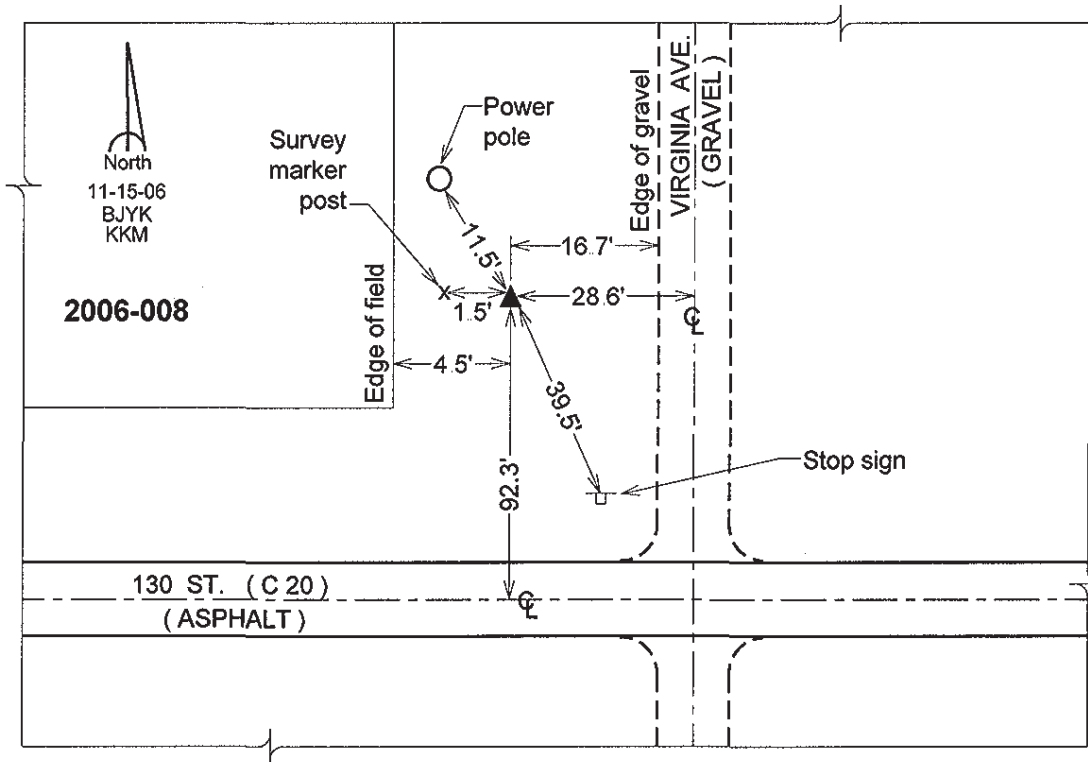
Northing: 3778293.77sft Easting: 4778949.34sft

Orthometric Height: 1128.80sft Ellipsoid Height: 1032.94sft Geoid03

Latitude: 42°51'49.77211"N Longitude: 94°01'50.80626"W

Mapping Angle: -0°21'35" Combination Scale Factor: 0.999901930

Monument Type: Berntsen Top Security Rod Monument with a 2-1/2" dia. domed survey cap and permanent magnet encased in a 5" dia. PVC pipe with a NGS style aluminum access cover.



This document was prepared by DCI and GBC for use by Humboldt County, Iowa