

Reprinted on 10-29-2008  
**Humboldt County, Iowa**  
 Iowa North Zone (1401)  
 Horiz. Datum: NAD83(1996)  
 Vert. Datum: NAVD 1988  
 US Survey Feet  
**2006**

Point Name: 9

**Designation:** 2006 -009 Humboldt County GPS Control Pt.

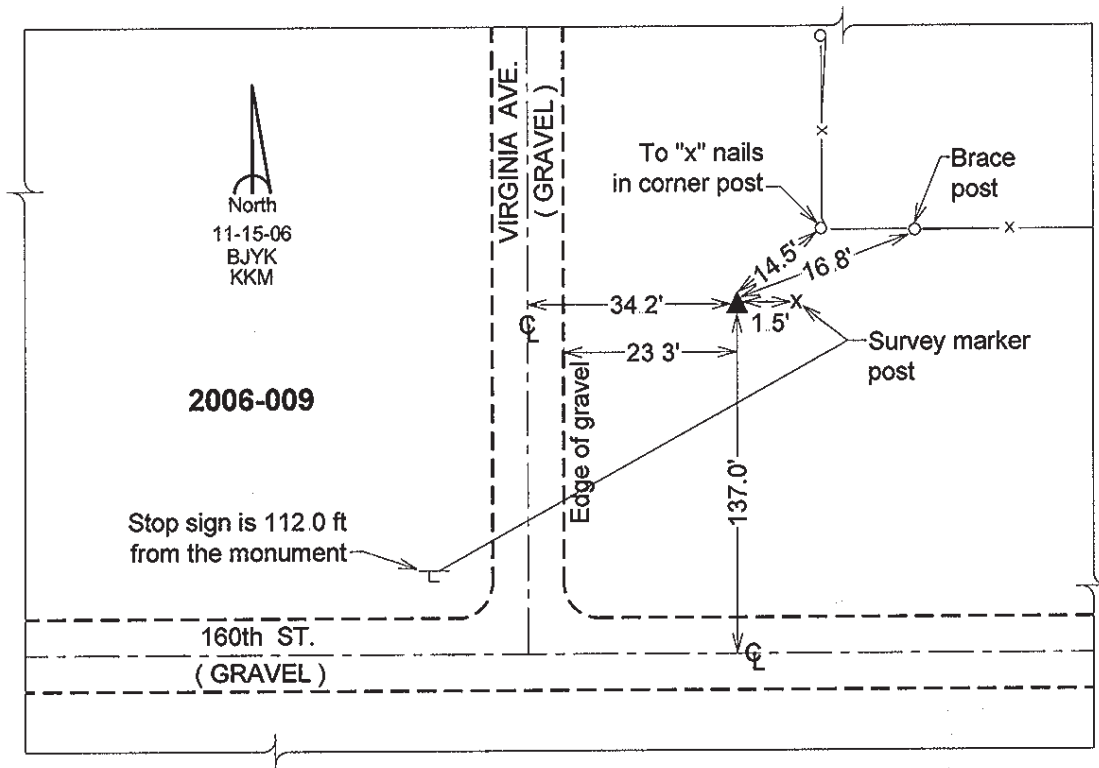
Northing: 3762542.99sft Easting: 4778956.96sft

Orthometric Height: 1154.28sft Ellipsoid Height: 1058.81sft **Geoid03**

Latitude: 42°49'14.19045"N Longitude: 94°01'49.37702"W

Mapping Angle: -0°21'34" Combination Scale Factor: 0.999898410

**Monument Type:** Berntsen Top Security Rod Monument with a 2-1/2" dia. domed survey cap and permanent magnet encased in a 5" dia. PVC pipe with a NGS style aluminum access cover.



*This document was prepared by DCI and GBC for use by Humboldt County, Iowa*