

2000  
Iowa County, Iowa  
Iowa South Zone (1402)  
NAD\_83(1996)

Point Number: 14

Northing: 672099.53(Ft)      Easting: 2095512.83(Ft)

Northing: 204856.346(M)      Easting: 638713.588(M)

Elev: 861.36(Ft) NAVD\_88

Elev: 262.542(M) NAVD\_88      Ellip Ht: 230.471(M)      96C Geoid Ht: -32.070(M)

Latitude: 41-49-57.673842 N      Longitude: 91-49-48.077243 W

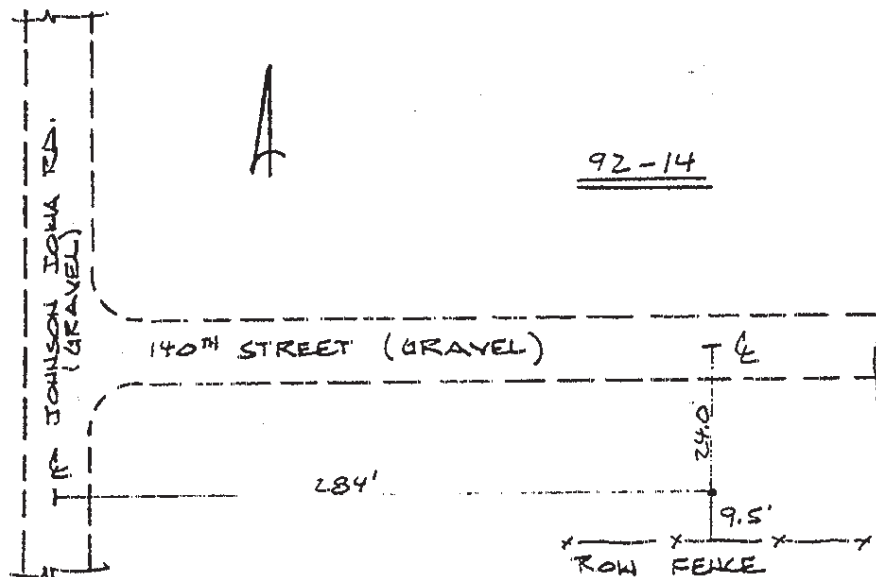
Theta: 1-06-00.06      Combination Factor: 0.99997297

Designation: 92-14 JOHNSON CO GPS CONTROL PT

**Monument Type:** 5/8" dia driven aluminum rod with a 2-1/2" dia aluminum cap and permanent magnet encased in a 5" dia PVC pipe with an aluminum access cover.

**To Reach:** 285ft E of Johson Iowa Rd, 25ft S of 140th St, E of the NW Corner Sec 14, T81N, R8W.

Date Printed March 22, 2000



STATION IS EAST OF THE  
NW COR OF SEC 14  
T 81 N , R 8 W.