

Iowa County, Iowa
Iowa South Zone (1402)
Horiz. Datum: NAD83(NSRS2007)
Vert. Datum: NAVD 1988
US Survey Feet
2008

Point Name: **44**

Designation: 92-44 Johnson Co GPS Control Pt (Set by ASI in 1992)

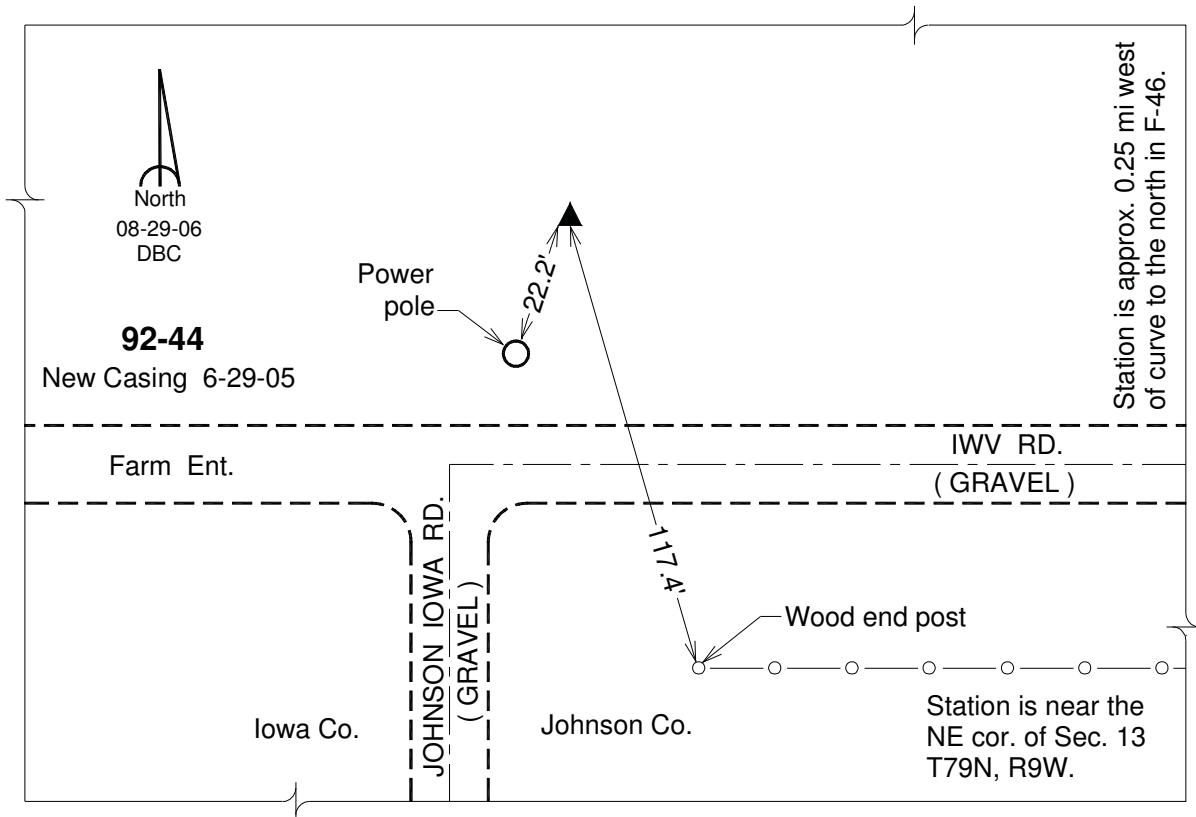
Northing: **608624.18**sft Easting: **2095818.67**sft

Orthometric Height: **843.05**sft Ellipsoid Height: **736.69**sft **Geoid03**

Latitude: **41°39'30.63276"N** Longitude: **91°50'00.10264"W**

Mapping Angle: **1°05'52"** Combination Scale Factor: **0.99994507**

Monument Type: 5/8" dia. driven aluminum rod with a 2-1/2" dia. aluminum cap and permanent magnet encased in a 6" dia. PVC pipe with an aluminum access cover.



This document was prepared by DCI and GBC for use by Iowa County, Iowa.