

2000
Iowa County, Iowa
Iowa South Zone (1402)
NAD_83(1996)

Point Number: 203

Northing: 681899.55(Ft) Easting: 2034137.69(Ft)

Northing: 207843.398(M) Easting: 620006.407(M)

Elev: 911.16(Ft) NAVD_88

Elev: 277.720(M) NAVD_88 Ellip Ht: 245.931(M) 96C Geoid Ht: -31.790(M)

Latitude: 41-51-45.330793 N Longitude: 92-03-16.544840 W

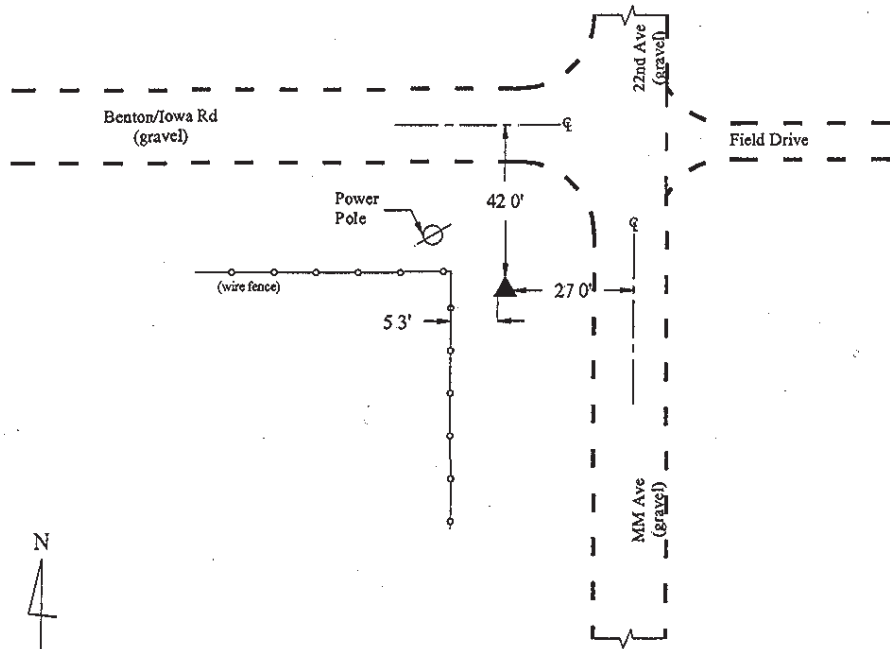
Theta: 0-57-07.52 Combination Factor: 0.99997644

Designation: 99-203 IOWA CO GPS CONTROL PT

Monument Type: 5/8" dia driven aluminum rod with a 2-1/2" dia aluminum cap and permanent magnet encased in a 5" dia PVC pipe with an aluminum access cover.

To Reach: 30ft W of "MM" Ave and 40ft S of Benton/Iowa Road. Near the N 1/4 Corner of Sec 6, T81N, R10W.

Date Printed March 22, 2000



99-203
BRS/RKE

Quad Name: Marengo

Set NGS style rod
monument with
access cover