

Iowa County, Iowa  
Iowa South Zone (1402)  
Horiz. Datum: NAD83(NSRS2007)  
Vert. Datum: NAVD 1988  
US Survey Feet  
**2008**

Point Name: **2101**

**Designation:** 96-101 Washington Co GPS Control Pt (Set by ASI in 1996)

Northing: **554256.11sft**    Easting: **2064731.49sft**

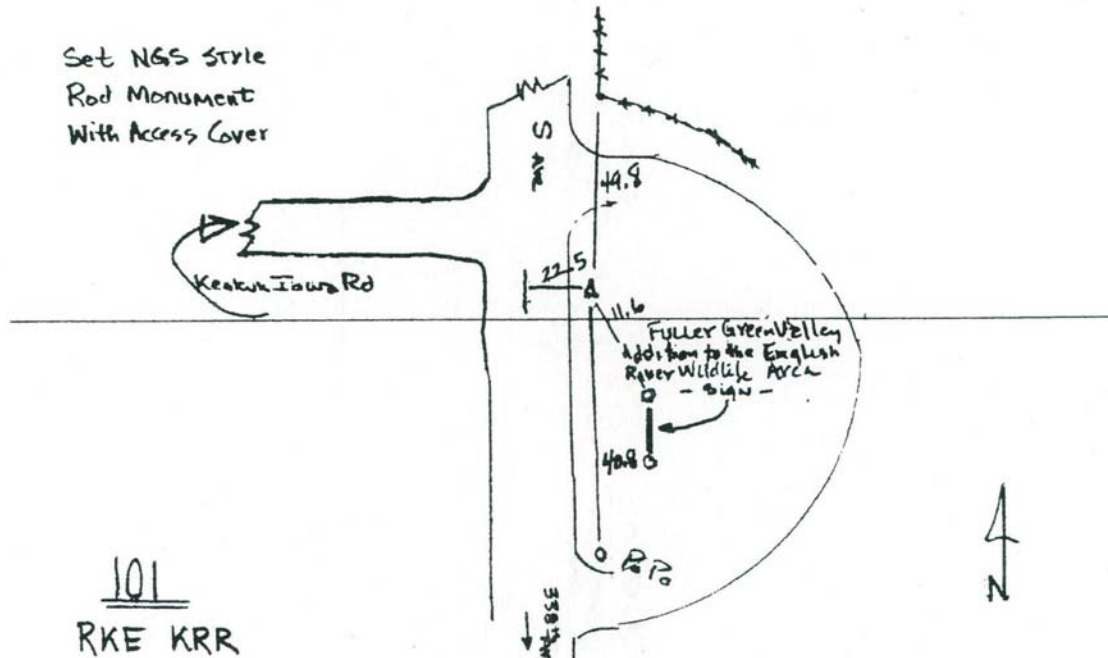
Orthometric Height: **713.30sft**    Ellipsoid Height: **606.68sft**    **Geoid03**

Latitude: **41°30'39.25047"N**    Longitude: **91°57'02.34195"W**

Mapping Angle: **1°01'14"**    Combination Scale Factor: **0.99993403**

**Monument Type:** 5/8" dia. driven aluminum rod with a 2-1/2" dia. aluminum cap and permanent magnet encased in a 6" dia. PVC pipe with an aluminum access cover.

To Reach: 25 ft. East of "S" Av., 50 ft. North of Keokuk-Iowa Rd. at west side of parking lot for Fuller Green Valley Addition to the English River Wildlife Area. Near the S.E. corner of Sec 36, T77N, R10W.



*This document was prepared by DCI and GBC for use by Iowa County, Iowa.*