

Iowa County, Iowa  
Iowa South Zone (1402)  
Horiz. Datum: NAD83(NSRS2007)  
Vert. Datum: NAVD 1988  
US Survey Feet  
**2008**

Point Name: **3218**

**Designation:** 99-218 Iowa Co GPS Control Pt (Set by ASI in 1999)

Northing: **553057.06sft** Easting: **2001471.23sft**

Orthometric Height: **828.15sft** Ellipsoid Height: **722.36sft** **Geoid03**

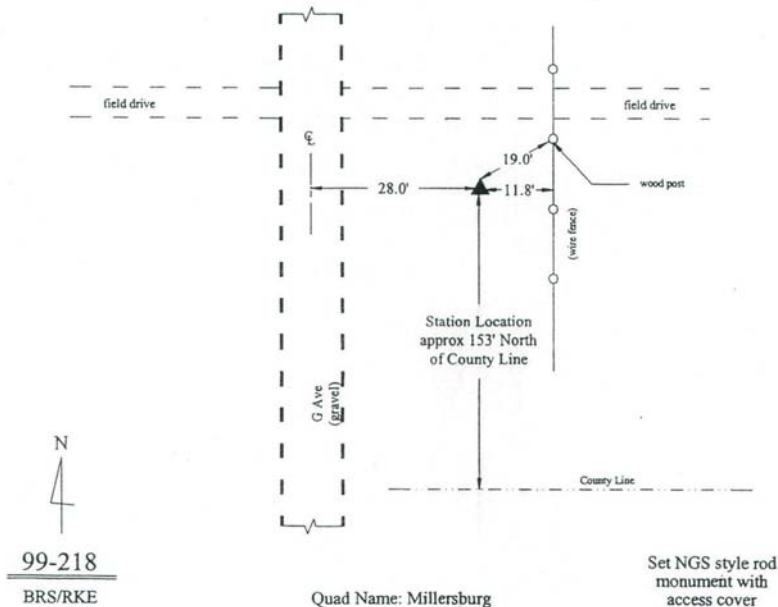
Latitude: **41°30'37.70777"N** Longitude: **92°10'54.00434"W**

Mapping Angle: **0°52'06"** Combination Scale Factor: **0.99992847**

**Monument Type:** 5/8" dia. driven aluminum rod with a 2-1/2" dia. aluminum cap and permanent magnet encased in a 6" dia. PVC pipe with an aluminum access cover.

**To Reach:** 30ft E of "G" Ave and 150ft N of Iowa/Keokuk Co line. Near the SW Corner of Sec 31, T78N, R11W.

Date Printed March 22, 2000



*This document was prepared by DCI and GBC for use by Iowa County, Iowa.*