

**Iowa County, Iowa**  
Iowa South Zone (1402)  
Horiz. Datum: NAD83(NSRS2007)  
Vert. Datum: NAVD 1988  
US Survey Feet  
**2008**

Point Name: **3438**

**Designation:** 2003-438 Keokuk Co GPS Control Pt (Set by DCI in 2003)

Northing: **552024.08sft**    Easting: **2016254.16sft**

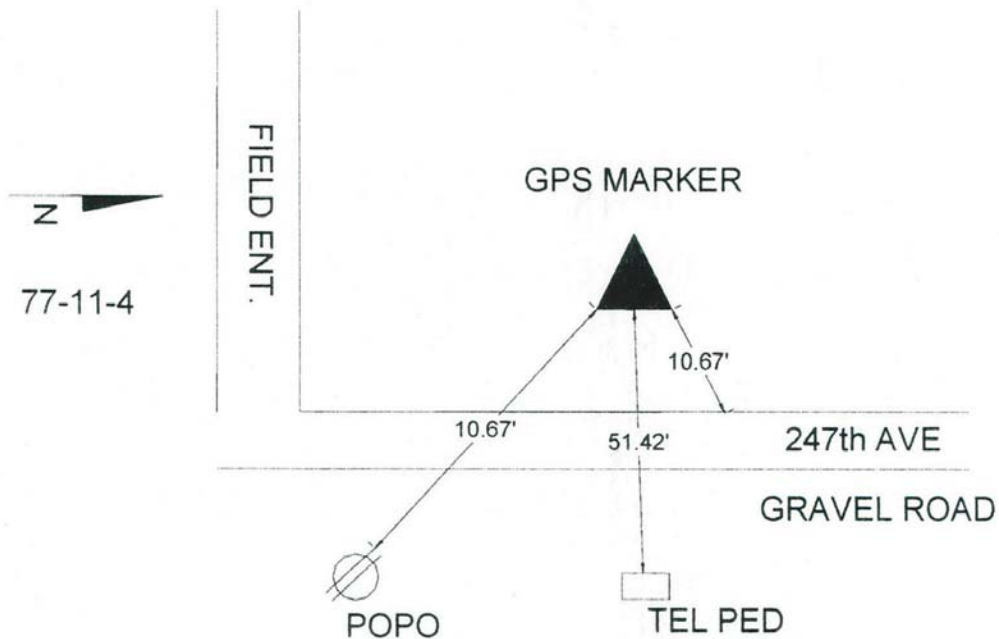
Orthometric Height: **841.93sft**    Ellipsoid Height: **735.87sft**    **Geoid03**

Latitude: **41°30'25.24424"N**    Longitude: **92°07'39.93128"W**

Mapping Angle: **0°54'14"**    Combination Scale Factor: **0.99992750**

**Monument Type:** 5/8" dia. driven aluminum rod with a 2-1/2" dia. aluminum cap and permanent magnet encased in a 5" dia. PVC pipe with an aluminum access cover.

**# 438**



*This document was prepared by DCI and GBC for use by Iowa County, Iowa.*