

Iowa County, Iowa
 Iowa South Zone (1402)
 Horiz. Datum: NAD83(NSRS2007)
 Vert. Datum: NAVD 1988
 US Survey Feet
2008

Point Name: **3492**

Designation: CBN and 2nd order vertical control station "L 87" PID:MH0109

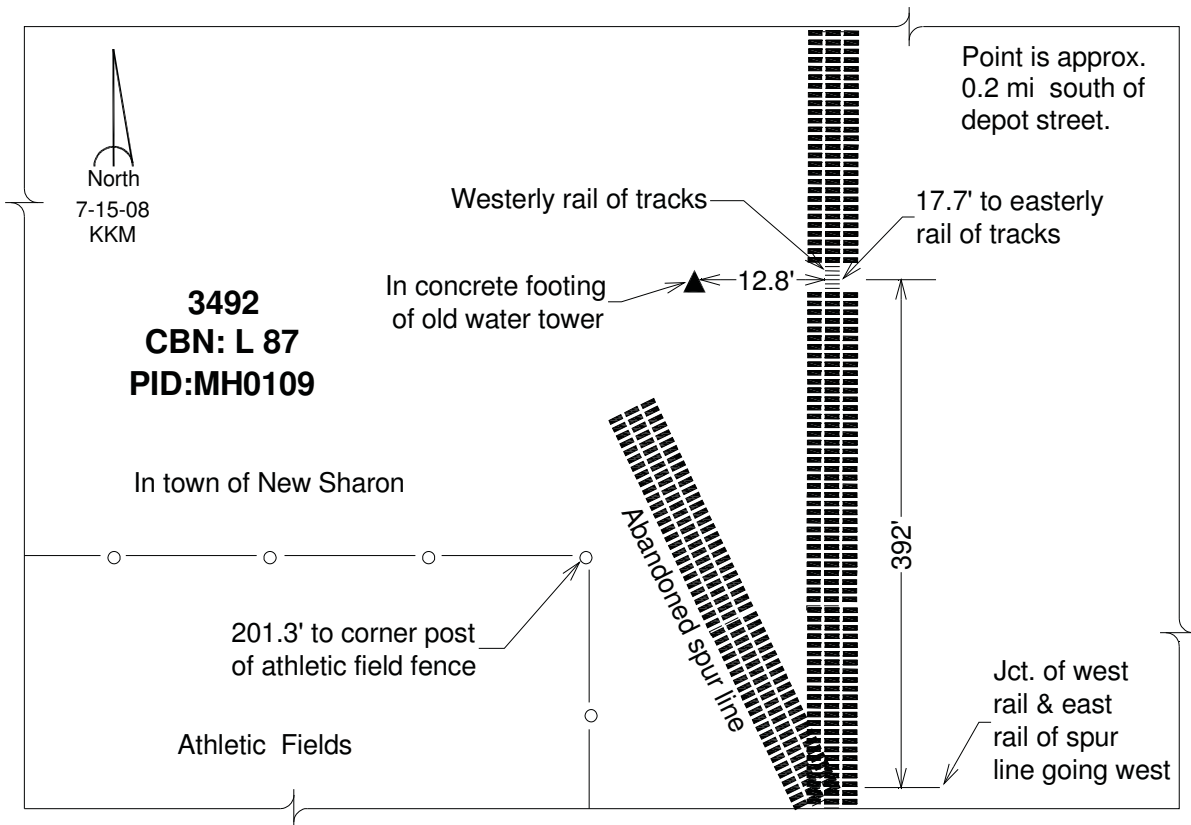
Northing: **534179.98sft** Easting: **1874202.74sft**

Orthometric Height: **864.19sft** Ellipsoid Height: **758.74sft** **Geoid03**

Latitude: **41°27'46.90692"N** Longitude: **92°38'49.22190"W**

Mapping Angle: **0°33'43"** Combination Scale Factor: **0.99992261**

Monument Type: Station is a CGS bench mark disk stamped -- L 87 1934 -- and set in a concrete footing for a water tower (now removed) and flush with the ground.



This document was prepared by DCI and GBC for use by Iowa County, Iowa.