

Iowa County, Iowa  
Iowa South Zone (1402)  
Horiz. Datum: NAD83(NSRS2007)  
Vert. Datum: NAVD 1988  
US Survey Feet  
**2008**

Point Name: **4001**

**Designation:** 2003-001 Benton Co GPS Control Pt (Set by DCI in 2003)

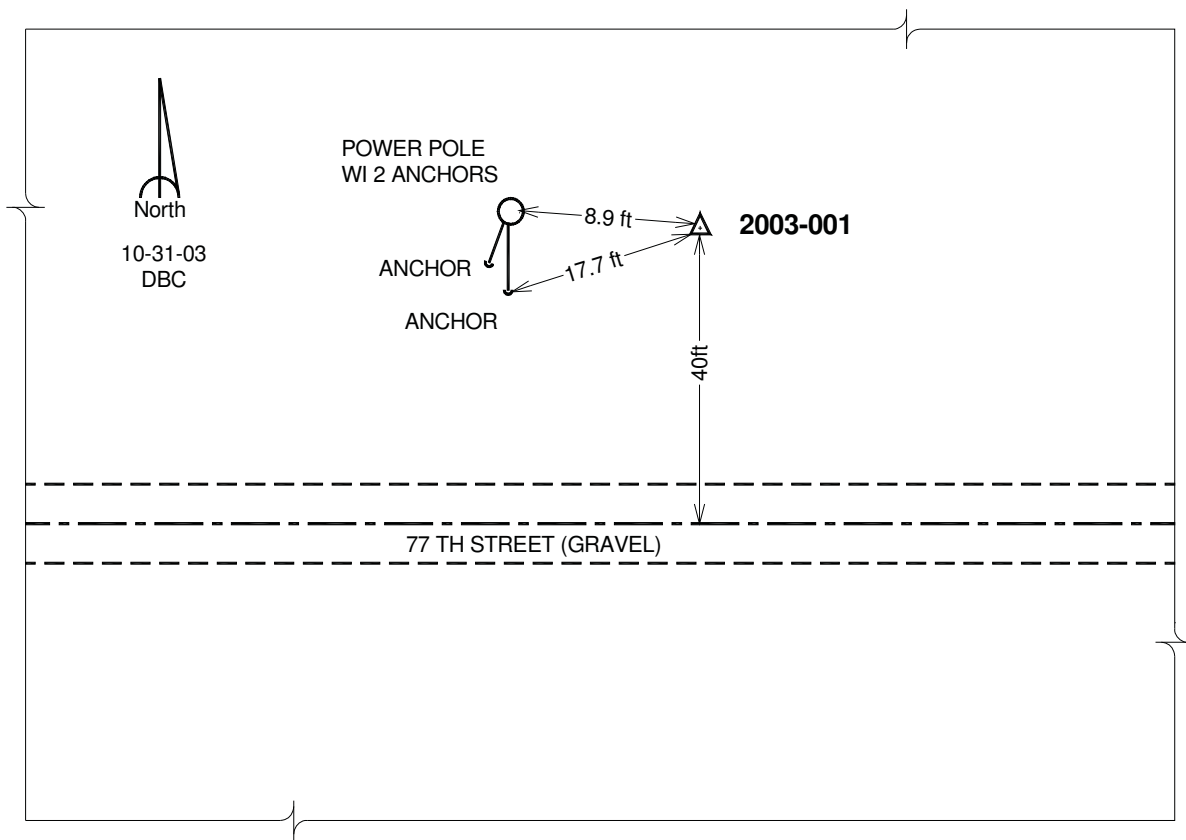
Northing: **696915.05**sft Easting: **1968724.11**sft

Orthometric Height: **786.53**sft Ellipsoid Height: **682.51**sft **Geoid03**

Latitude: **41°54'23.49923"N** Longitude: **92°17'38.18382"W**

Mapping Angle: **0°47'40"** Combination Scale Factor: **0.99999163**

**Monument Type:** 5/8" dia. driven aluminum rod with a 2-1/2" dia. aluminum cap and permanent magnet encased in a 5" dia. PVC pipe with an aluminum access cover.



*This document was prepared by DCI and GBC for use by Iowa County, Iowa.*