

Iowa County, Iowa
Iowa South Zone (1402)
Horiz. Datum: NAD83(NSRS2007)
Vert. Datum: NAVD 1988
US Survey Feet
2008

Point Name: **4010**

Designation: 2003-010 Benton Co GPS Control Pt (Set by DCI in 2003)

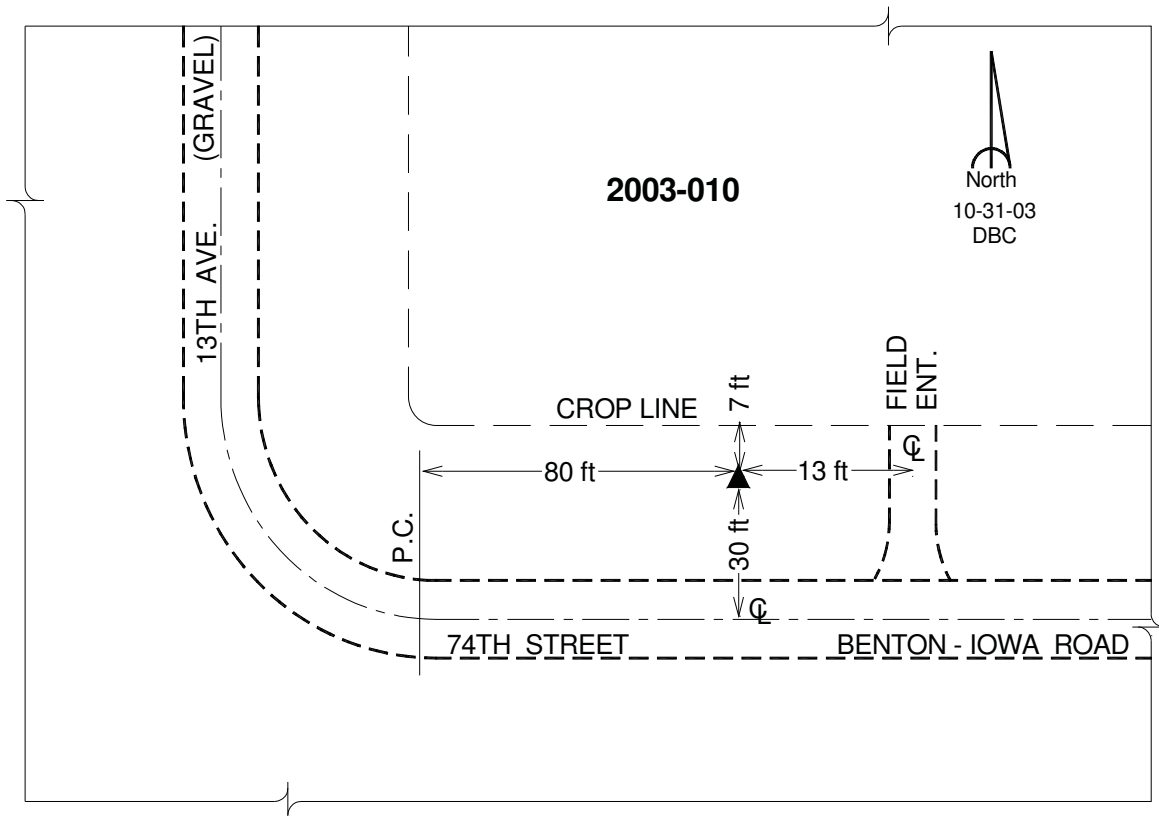
Northing: **681263.06**sft Easting: **1983937.94**sft

Orthometric Height: **761.74**sft Ellipsoid Height: **657.46**sft **Geoid03**

Latitude: **41°51'46.75882"N** Longitude: **92°14'20.01170"W**

Mapping Angle: **0°49'50"** Combination Scale Factor: **0.99998374**

Monument Type: 5/8" dia. driven aluminum rod with a 2-1/2" dia. aluminum cap and permanent magnet encased in a 5" dia. PVC pipe with an aluminum access cover.



This document was prepared by DCI and GBC for use by Iowa County, Iowa.