

Iowa County, Iowa  
Iowa South Zone (1402)  
Horiz. Datum: NAD83(NSRS2007)  
Vert. Datum: NAVD 1988  
US Survey Feet  
**2008**

Point Name: **4203**

**Designation:** 99-203 Iowa Co GPS Control Pt (Set by ASI in 1999)

Northing: **681899.60**sft Easting: **2034137.73**sft

Orthometric Height: **911.16**sft Ellipsoid Height: **806.51**sft **Geoid03**

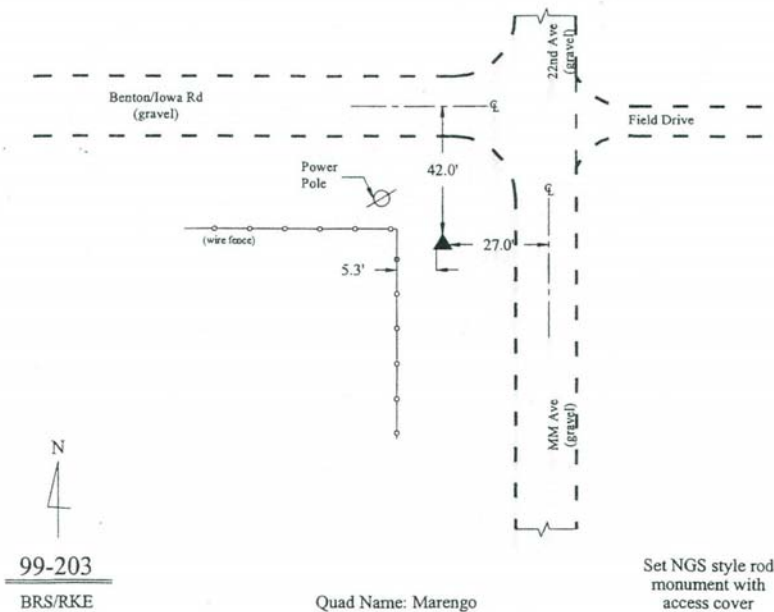
Latitude: **41°51'45.33133"N** Longitude: **92°03'16.54420"W**

Mapping Angle: **0°57'08"** Combination Scale Factor: **0.99997655**

**Monument Type:** 5/8" dia. driven aluminum rod with a 2-1/2" dia. aluminum cap and permanent magnet encased in a 6" dia. PVC pipe with an aluminum access cover.

**To Reach:** 30ft W of "MM" Ave and 40ft S of Benton/Iowa Road. Near the N 1/4 Corner of Sec 6, T81N, R10W.

Date Printed March 22, 2000



*This document was prepared by DCI and GBC for use by Iowa County, Iowa.*