

Iowa County, Iowa
Iowa South Zone (1402)
Horiz. Datum: NAD83(NSRS2007)
Vert. Datum: NAVD 1988
US Survey Feet
2008

Point Name: **4207**

Designation: 99-207 Iowa Co GPS Control Pt (Set by ASI in 1999)

Northing: **649489.67**sft Easting: **1999801.09**sft

Orthometric Height: **885.36**sft Ellipsoid Height: **780.34**sft **Geoid03**

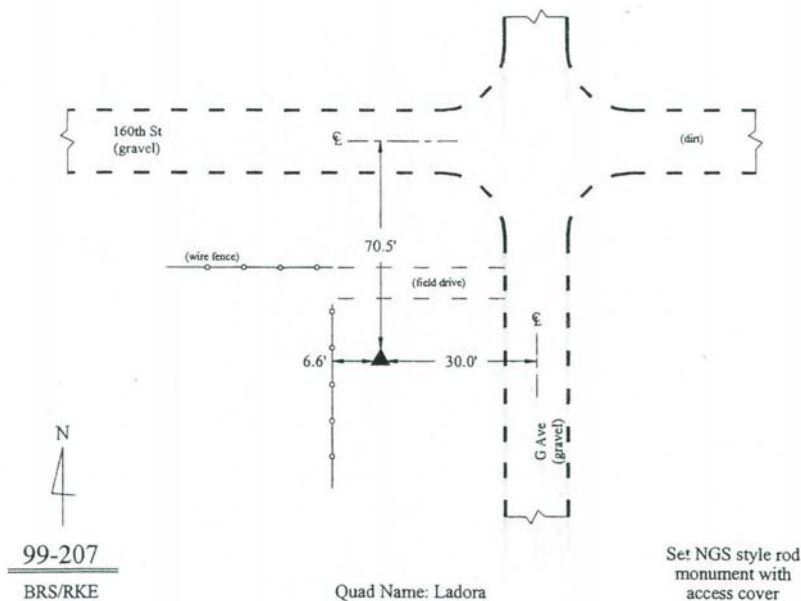
Latitude: **41°46'30.57633"N** Longitude: **92°10'56.75546"W**

Mapping Angle: **0°52'04"** Combination Scale Factor: **0.99996132**

Monument Type: 5/8" dia. driven aluminum rod with a 2-1/2" dia. aluminum cap and permanent magnet encased in a 6" dia. PVC pipe with an aluminum access cover.

To Reach: 30ft W of "G" Ave and 70ft S of 160th St. Near the NE Corner of Sec 1, T80N, R12W.

Date Printed March 22, 2000



This document was prepared by DCI and GBC for use by Iowa County, Iowa.