

Iowa County, Iowa
Iowa South Zone (1402)
Horiz. Datum: NAD83(NSRS2007)
Vert. Datum: NAVD 1988
US Survey Feet
2008

Point Name: **4208**

Designation: 99-208 Iowa Co GPS Control Pt (Set by ASI in 1999)

Northing: **649630.99sft** Easting: **1967924.88sft**

Orthometric Height: **902.47sft** Ellipsoid Height: **797.59sft** **Geoid03**

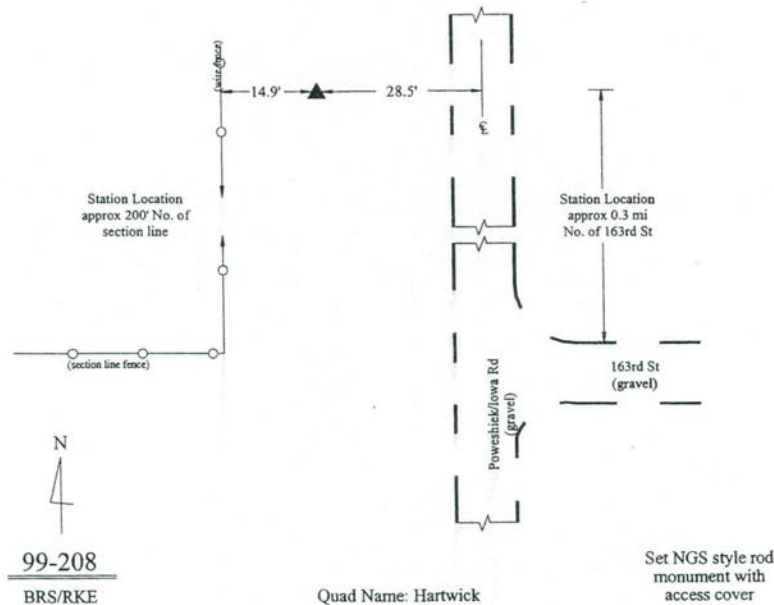
Latitude: **41°46'36.53083"N** Longitude: **92°17'57.38379"W**

Mapping Angle: **0°47'27"** Combination Scale Factor: **0.99996079**

Monument Type: 5/8" dia. driven aluminum rod with a 2-1/2" dia. aluminum cap and permanent magnet encased in a 6" dia. PVC pipe with an aluminum access cover.

To Reach: 30ft W of Poweshiek/Iowa Road 1/4 Mile N of 163rd St. Near the NW Corner of Sec 6, T80N, R12W.

Date Printed March 22, 2000



This document was prepared by DCI and GBC for use by Iowa County, Iowa.