

Iowa County, Iowa  
Iowa South Zone (1402)  
Horiz. Datum: NAD83(NSRS2007)  
Vert. Datum: NAVD 1988  
US Survey Feet  
**2008**

Point Name: **4209**

**Designation:** 99-209 Iowa Co GPS Control Pt (Set by ASI in 1999)

Northing: **617716.51**sft Easting: **1968216.74**sft

Orthometric Height: **910.66**sft Ellipsoid Height: **805.31**sft **Geoid03**

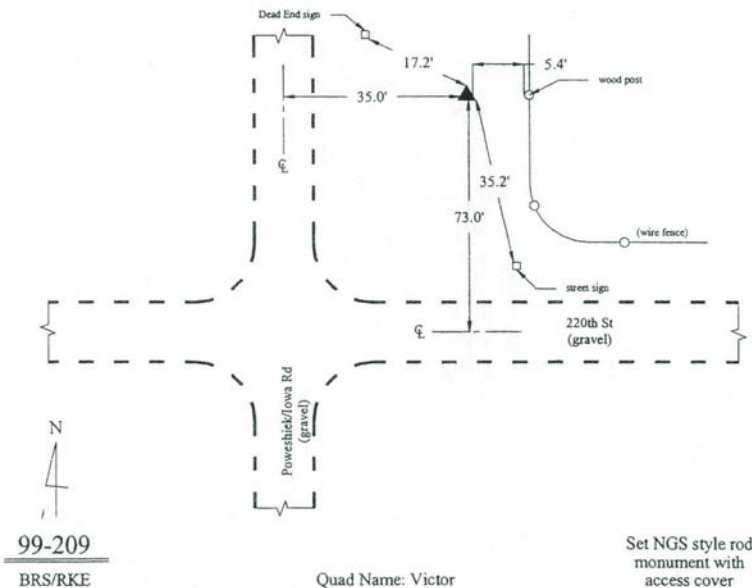
Latitude: **41°41'21.22363"N** Longitude: **92°17'59.34380"W**

Mapping Angle: **0°47'26"** Combination Scale Factor: **0.99994622**

**Monument Type:** 5/8" dia. driven aluminum rod with a 2-1/2" dia. aluminum cap and permanent magnet encased in a 6" dia. PVC pipe with an aluminum access cover.

**To Reach:** 35ft E of Poweshiek/Iowa Road 75ft N of 220th St. Near the SW Corner of Sec 31, T80N, R12W.

Date Printed March 22, 2000



*This document was prepared by DCI and GBC for use by Iowa County, Iowa.*