

Iowa County, Iowa
Iowa South Zone (1402)
Horiz. Datum: NAD83(NSRS2007)
Vert. Datum: NAVD 1988
US Survey Feet
2008

Point Name: **4212**

Designation: 99-212 Iowa Co GPS Control Pt (Set by ASI in 1999)

Northing: **618629.89sft** Easting: **2062522.92sft**

Orthometric Height: **850.20sft** Ellipsoid Height: **744.27sft** **Geoid03**

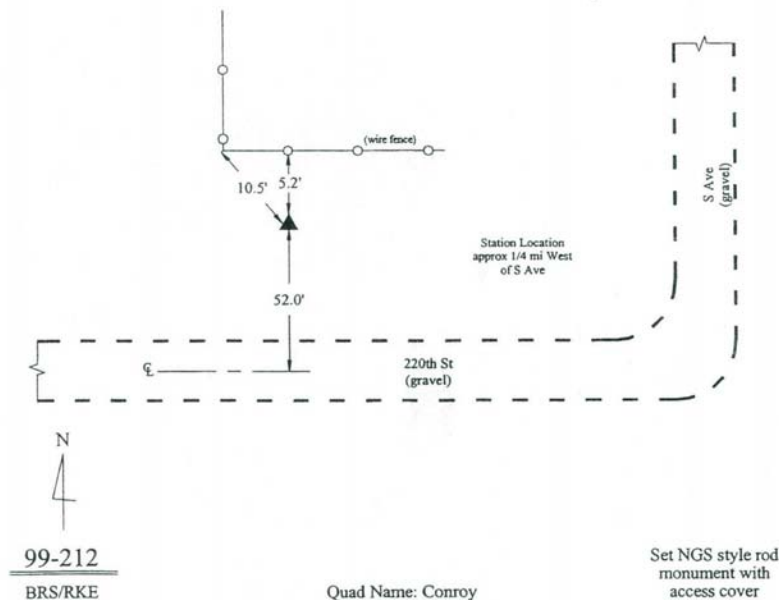
Latitude: **41°41'15.54209"N** Longitude: **91°57'16.33451"W**

Mapping Angle: **1°01'05"** Combination Scale Factor: **0.99994890**

Monument Type: 5/8" dia. driven aluminum rod with a 2-1/2" dia. aluminum cap and permanent magnet encased in a 6" dia. PVC pipe with an aluminum access cover.

To Reach: 55ft N of 220th Ave, 1/4 Mile W of "S" Ave. Approx 1/4 Mile W of the SE Corner of Sec 36, T80N, R10W.

Date Printed March 22, 2000



This document was prepared by DCI and GBC for use by Iowa County, Iowa.