

**Iowa County, Iowa**  
Iowa South Zone (1402)  
Horiz. Datum: NAD83(NSRS2007)  
Vert. Datum: NAVD 1988  
US Survey Feet  
**2008**

Point Name: **4213**

**Designation:** 99-213 Iowa Co GPS Control Pt (Set by ASI in 1999)

Northing: **585539.95**sft    Easting: **2066314.21**sft

Orthometric Height: **817.34**sft    Ellipsoid Height: **710.98**sft    **Geoid03**

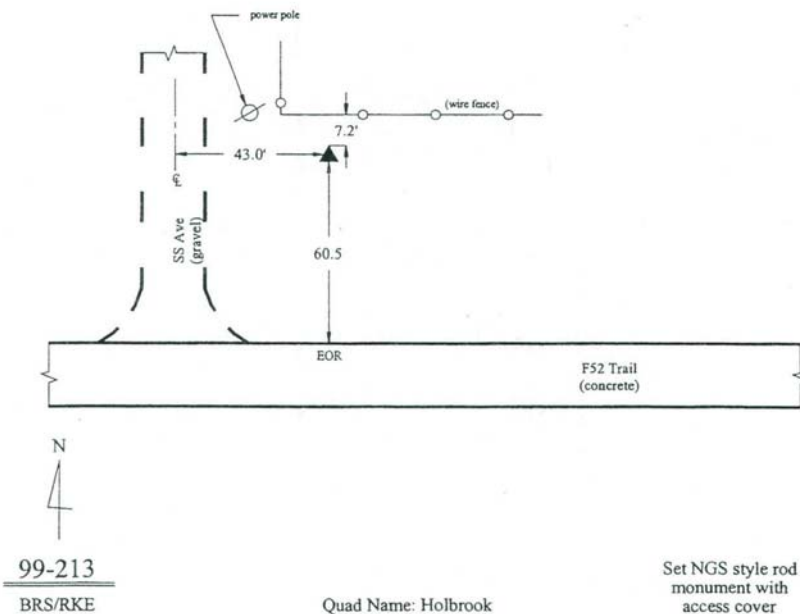
Latitude: **41°35'48.00623"N**                      Longitude: **91°56'34.18027"W**

Mapping Angle: **1°01'33"**                      Combination Scale Factor: **0.99993826**

**Monument Type:** 5/8" dia. driven aluminum rod with a 2-1/2" dia. aluminum cap and permanent magnet encased in a 6" dia. PVC pipe with an aluminum access cover.

**To Reach:** 45ft E of "SS" Ave and 75ft N of F52 Trail. In the NW 1/4 of Section 6, T78N, R9W.

Date Printed March 22, 2000



*This document was prepared by DCI and GBC for use by Iowa County, Iowa.*