

Iowa County, Iowa
Iowa South Zone (1402)
Horiz. Datum: NAD83(NSRS2007)
Vert. Datum: NAVD 1988
US Survey Feet
2008

Point Name: **4214**

Designation: 99-214 Iowa Co GPS Control Pt (Set by ASI in 1999)

Northing: **587212.66sft** Easting: **2032708.25sft**

Orthometric Height: **801.12sft** Ellipsoid Height: **695.09sft** **Geoid03**

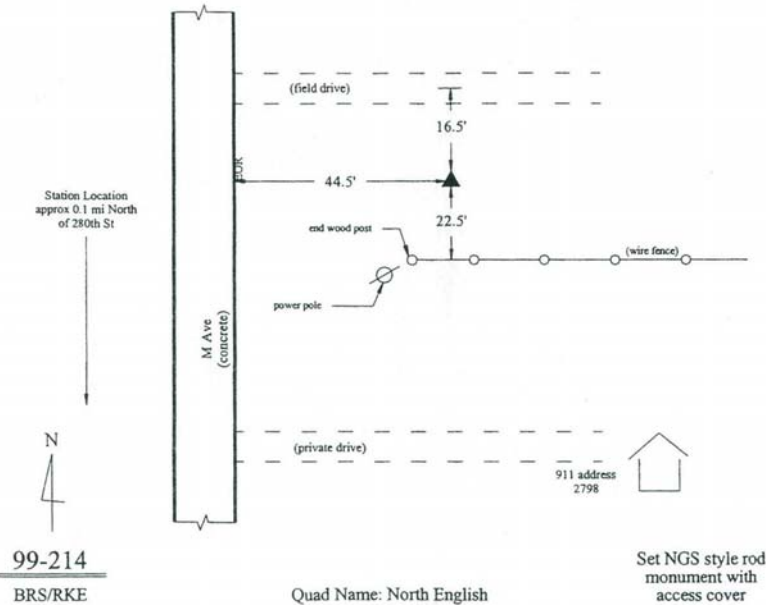
Latitude: **41°36'10.23920"N** Longitude: **92°03'56.06761"W**

Mapping Angle: **0°56'41"** Combination Scale Factor: **0.99993977**

Monument Type: 5/8" dia. driven aluminum rod with a 2-1/2" dia. aluminum cap and permanent magnet encased in a 6" dia. PVC pipe with an aluminum access cover.

To Reach: 55ft E of "M" Ave. approx 800ft N of 280th St. Approx 800ft N of the SW Corner of Sec 31, T79N, R10W.

Date Printed March 22, 2000



This document was prepared by DCI and GBC for use by Iowa County, Iowa.