

Iowa County, Iowa
Iowa South Zone (1402)
Horiz. Datum: NAD83(NSRS2007)
Vert. Datum: NAVD 1988
US Survey Feet
2008

Point Name: **4216**

Designation: 99-216 Iowa Co GPS Control Pt (Set by ASI in 1999)

Northing: **585789.05sft** Easting: **1968797.93sft**

Orthometric Height: **840.16sft** Ellipsoid Height: **734.74sft** **Geoid03**

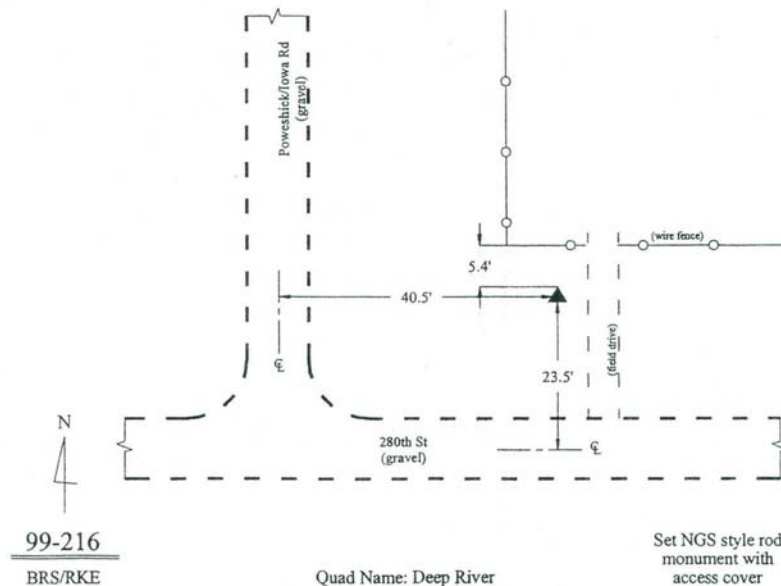
Latitude: **41°36'05.73977"N** Longitude: **92°17'57.49280"W**

Mapping Angle: **0°47'27"** Combination Scale Factor: **0.99993773**

Monument Type: 5/8" dia. driven aluminum rod with a 2-1/2" dia. aluminum cap and permanent magnet encased in a 6" dia. PVC pipe with an aluminum access cover.

To Reach: 25ft N of 280th St and 40ft W of Poweshiek/Iowa Rd. Near the SW Corner of Sec 31, T79N, R12W.

Date Printed March 22, 2000



This document was prepared by DCI and GBC for use by Iowa County, Iowa.