

Iowa County, Iowa  
Iowa South Zone (1402)  
Horiz. Datum: NAD83(NSRS2007)  
Vert. Datum: NAVD 1988  
US Survey Feet  
**2008**

Point Name: **4221**

**Designation:** 99-221 Iowa Co GPS Control Pt (Set by ASI in 1999)

Northing: **659604.89sft**    Easting: **2076627.19sft**

Orthometric Height: **742.59sft**    Ellipsoid Height: **637.04sft**    **Geoid03**

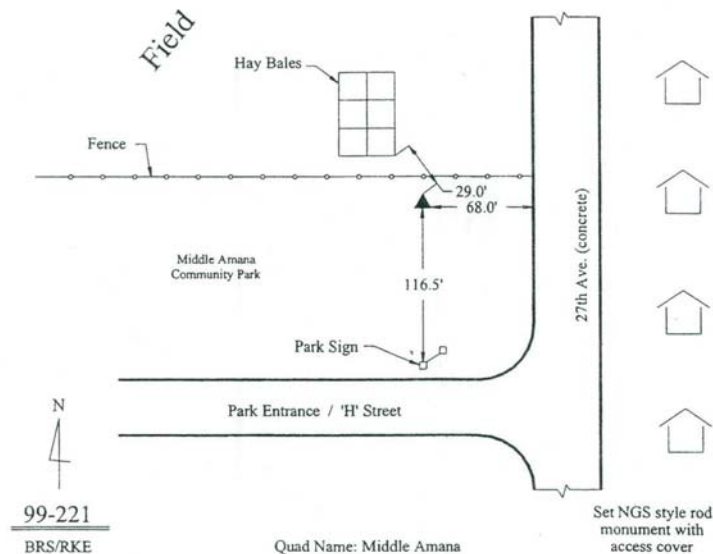
Latitude: **41°47'57.76564"N**    Longitude: **91°54'00.53880"W**

Mapping Angle: **1°03'14"**    Combination Scale Factor: **0.99997249**

**Monument Type:** 5/8" dia. driven aluminum rod with a 2-1/2" dia. aluminum cap and permanent magnet encased in a 6" dia. PVC pipe with an aluminum access cover.

**To Reach:** Set in NE Corner of Amana Community Park in Middle Amana near the N 1/4 Corner of Sec 28 T81N R9W.

Date Printed March 22, 2000



*This document was prepared by DCI and GBC for use by Iowa County, Iowa.*