

Iowa County, Iowa  
Iowa South Zone (1402)  
Horiz. Datum: NAD83(NSRS2007)  
Vert. Datum: NAVD 1988  
US Survey Feet  
2008

Point Name: **4225**

**Designation:** 2008-225 Iowa Co GPS Control Pt

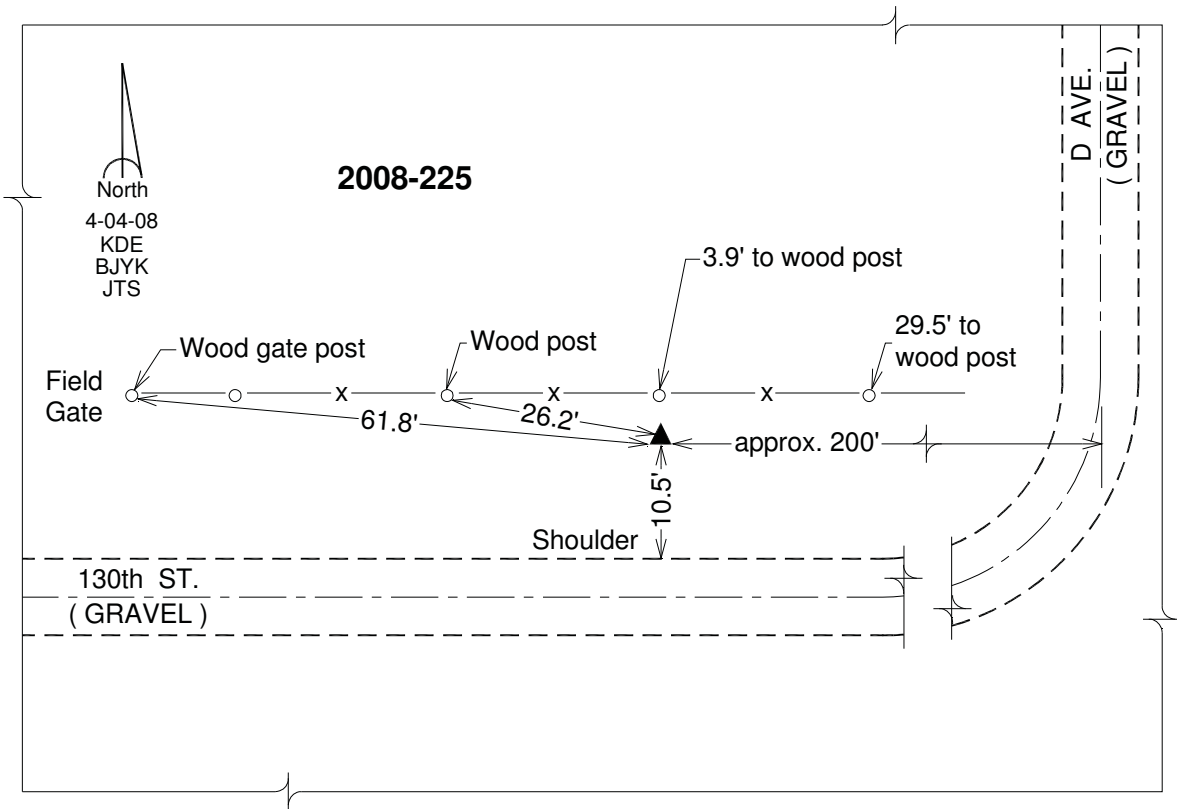
Northing: **665300.75**sft Easting: **1983697.82**sft

Orthometric Height: **908.83**sft Ellipsoid Height: **804.22**sft **Geoid03**

Latitude: **41°49'09.11691"N** Longitude: **92°14'26.23888"W**

Mapping Angle: **0°49'46"** Combination Scale Factor: **0.99996819**

**Monument Type:** Berntsen 3/4" Top Security Rod Monument with a 2-1/2" dia. domed survey cap and permanent magnet encased in a white PVC pipe with a NGS style alum. access cover.



*This document was prepared by DCI and GBC for use by Iowa County, Iowa.*