

Iowa County, Iowa
 Iowa South Zone (1402)
 Horiz. Datum: NAD83(NSRS2007)
 Vert. Datum: NAVD 1988
 US Survey Feet
2008

Point Name: **4226**

Designation: 2008-226 Iowa Co GPS Control Pt

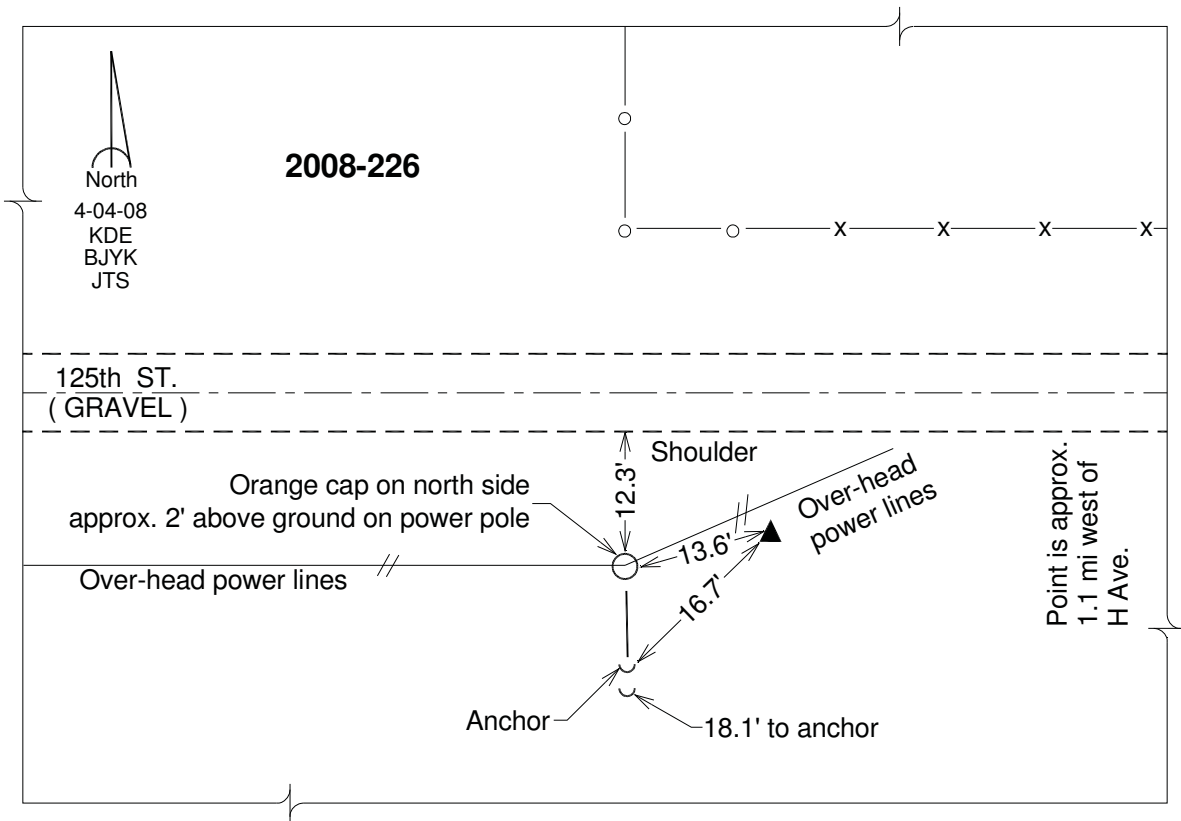
Northing: **668066.15**sft Easting: **1999748.83**sft

Orthometric Height: **752.07**sft Ellipsoid Height: **647.43**sft **Geoid03**

Latitude: **41°49'34.08415"N** Longitude: **92°10'53.72922"W**

Mapping Angle: **0°52'06"** Combination Scale Factor: **0.99997699**

Monument Type: Berntsen 3/4" Top Security Rod Monument with a 2-1/2" dia. domed survey cap and permanent magnet encased in a white PVC pipe with a NGS style alum. access cover.



This document was prepared by DCI and GBC for use by Iowa County, Iowa.