

Iowa County, Iowa
Iowa South Zone (1402)
Horiz. Datum: NAD83(NSRS2007)
Vert. Datum: NAVD 1988
US Survey Feet
2008

Point Name: **4227**

Designation: 2008-227 Iowa Co GPS Control Pt

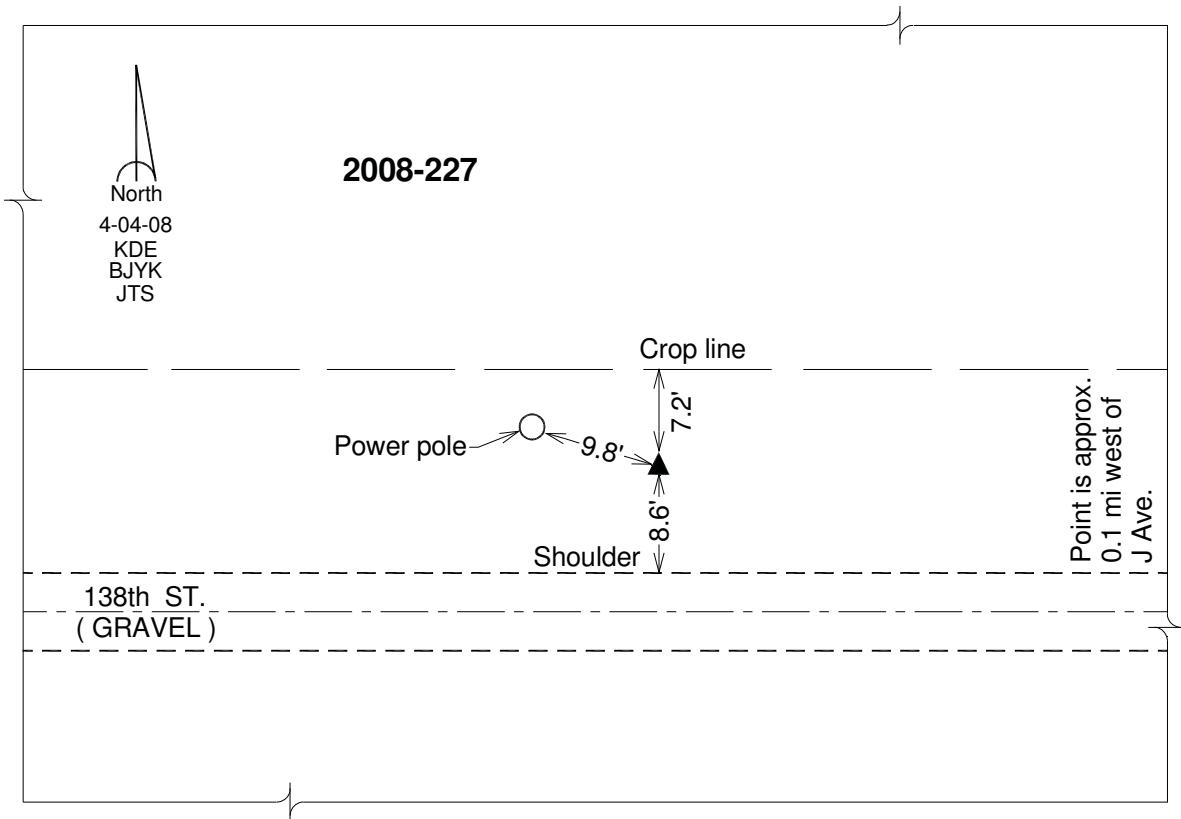
Northing: **661664.83**sft Easting: **2015492.97**sft

Orthometric Height: **750.13**sft Ellipsoid Height: **645.22**sft **Geoid03**

Latitude: **41°48'28.44332"N** Longitude: **92°07'27.14246"W**

Mapping Angle: **0°54'22"** Combination Scale Factor: **0.99997367**

Monument Type: Berntsen 3/4" Top Security Rod Monument with a 2-1/2" dia. domed survey cap and permanent magnet encased in a white PVC pipe with a NGS style alum. access cover.



This document was prepared by DCI and GBC for use by Iowa County, Iowa.