

Iowa County, Iowa
 Iowa South Zone (1402)
 Horiz. Datum: NAD83(NSRS2007)
 Vert. Datum: NAVD 1988
 US Survey Feet
2008

Point Name: **4228**

Designation: 2008-228 Iowa Co GPS Control Pt

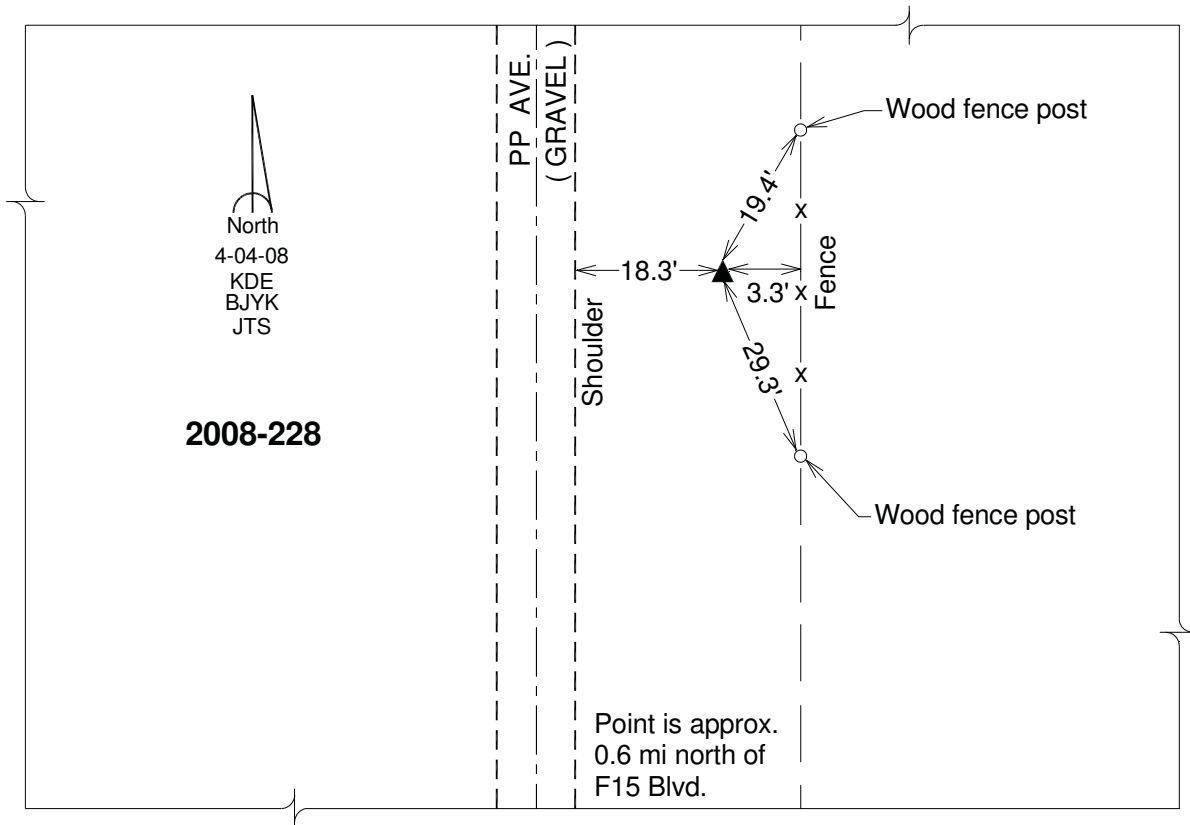
Northing: **666167.56**sft Easting: **2047608.80**sft

Orthometric Height: **852.98**sft Ellipsoid Height: **747.85**sft **Geoid03**

Latitude: **41°49'07.68715"N** Longitude: **92°00'22.11421"W**

Mapping Angle: **0°59'02"** Combination Scale Factor: **0.99997081**

Monument Type: Berntsen 3/4" Top Security Rod Monument with a 2-1/2" dia. domed survey cap and permanent magnet encased in a white PVC pipe with a NGS style alum. access cover.



This document was prepared by DCI and GBC for use by Iowa County, Iowa.