

Iowa County, Iowa
 Iowa South Zone (1402)
 Horiz. Datum: NAD83(NSRS2007)
 Vert. Datum: NAVD 1988
 US Survey Feet
2008

Point Name: **4235**

Designation: 2008-235 Iowa Co GPS Control Pt

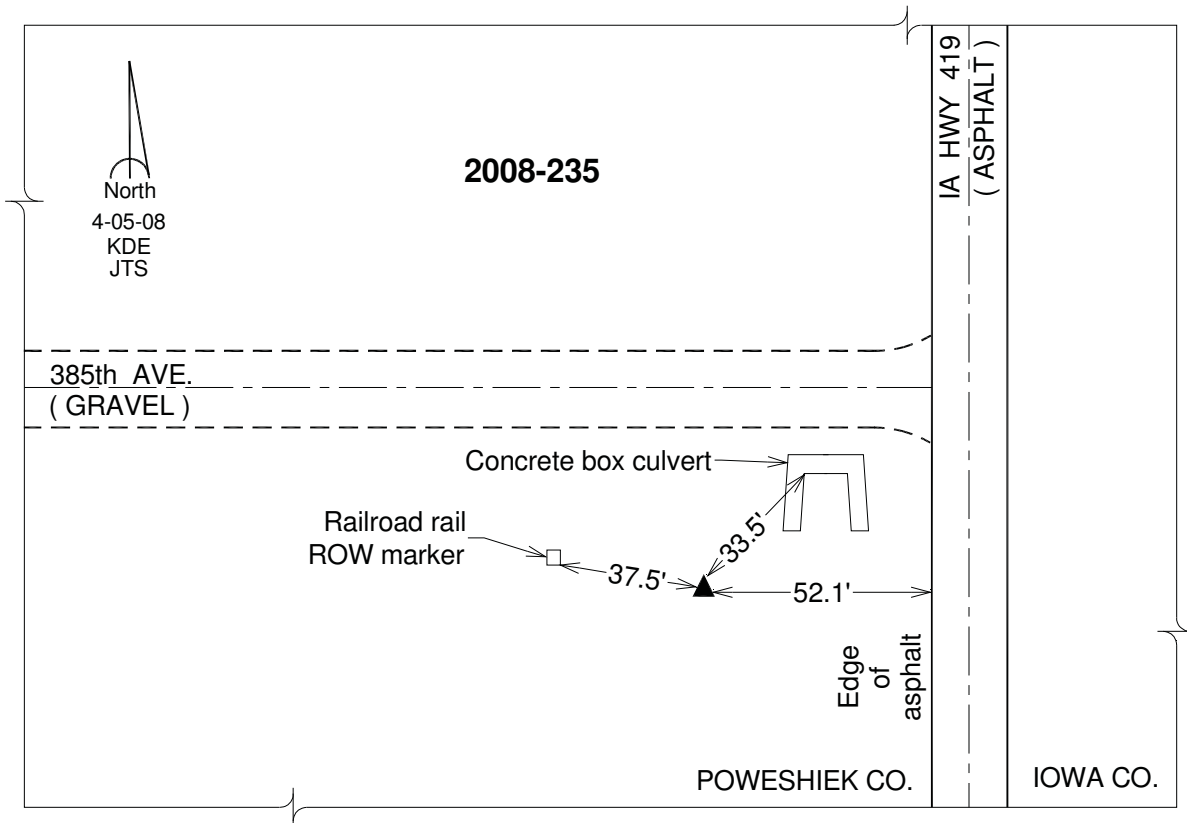
Northing: **636115.22sft** Easting: **1967898.12sft**

Orthometric Height: **795.96sft** Ellipsoid Height: **690.84sft** **Geoid03**

Latitude: **41°44'23.01992"N** Longitude: **92°18'00.19769"W**

Mapping Angle: **0°47'25"** Combination Scale Factor: **0.99995958**

Monument Type: Berntsen 3/4" Top Security Rod Monument with a 2-1/2" dia. domed survey cap and permanent magnet encased in a white PVC pipe with a NGS style alum. access cover.



This document was prepared by DCI and GBC for use by Iowa County, Iowa.