

Iowa County, Iowa  
Iowa South Zone (1402)  
Horiz. Datum: NAD83(NSRS2007)  
Vert. Datum: NAVD 1988  
US Survey Feet  
**2008**

Point Name: **4238**

**Designation:** 2008-238 Iowa Co GPS Control Pt

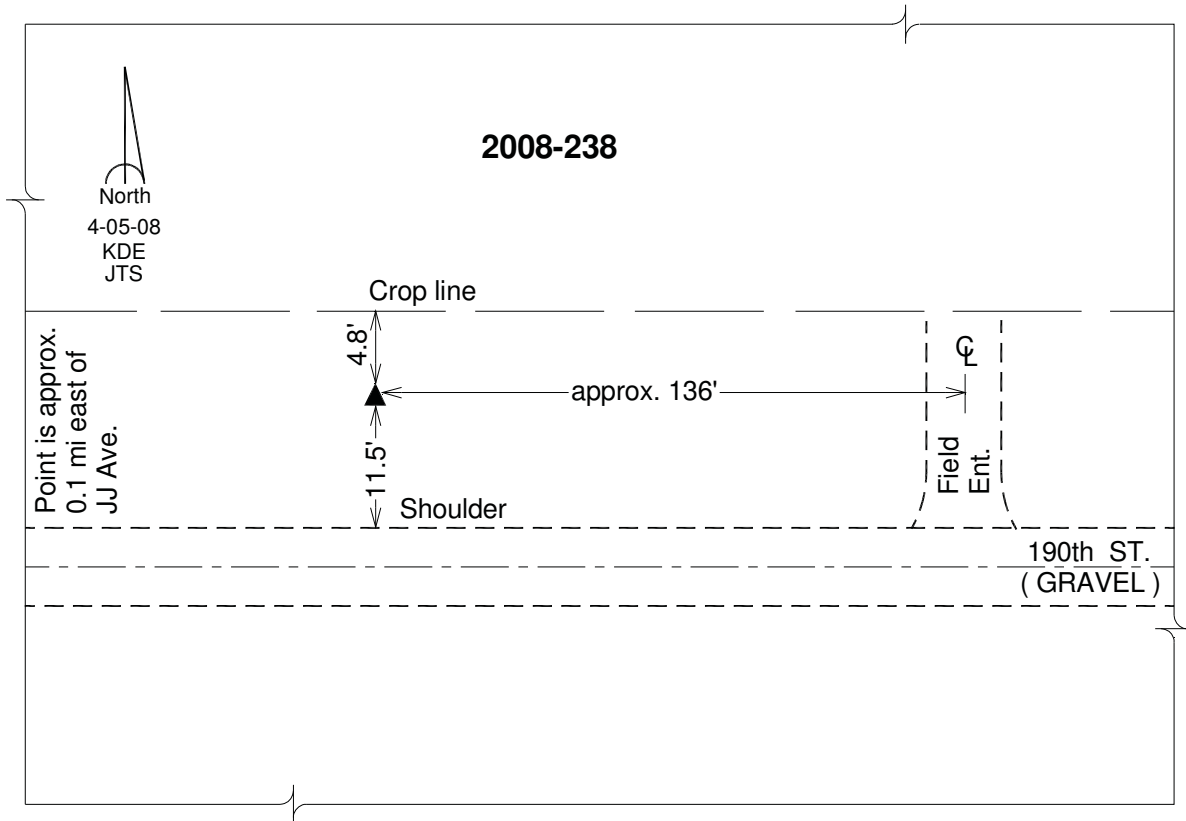
Northing: **633936.31**sft    Easting: **2018996.35**sft

Orthometric Height: **896.52**sft    Ellipsoid Height: **791.11**sft    **Geoid03**

Latitude: **41°43'53.98918"N**    Longitude: **92°06'46.72653"W**

Mapping Angle: **0°54'49"**    Combination Scale Factor: **0.99995349**

**Monument Type:** Berntsen 3/4" Top Security Rod Monument with a 2-1/2" dia. domed survey cap and permanent magnet encased in a white PVC pipe with a NGS style alum. access cover.



*This document was prepared by DCI and GBC for use by Iowa County, Iowa.*