

Iowa County, Iowa
Iowa South Zone (1402)
Horiz. Datum: NAD83(NSRS2007)
Vert. Datum: NAVD 1988
US Survey Feet
2008

Point Name: **4239**

Designation: 2008-239 Iowa Co GPS Control Pt

Northing: **634015.04**sft Easting: **2030402.14**sft

Orthometric Height: **886.19**sft Ellipsoid Height: **780.69**sft **Geoid03**

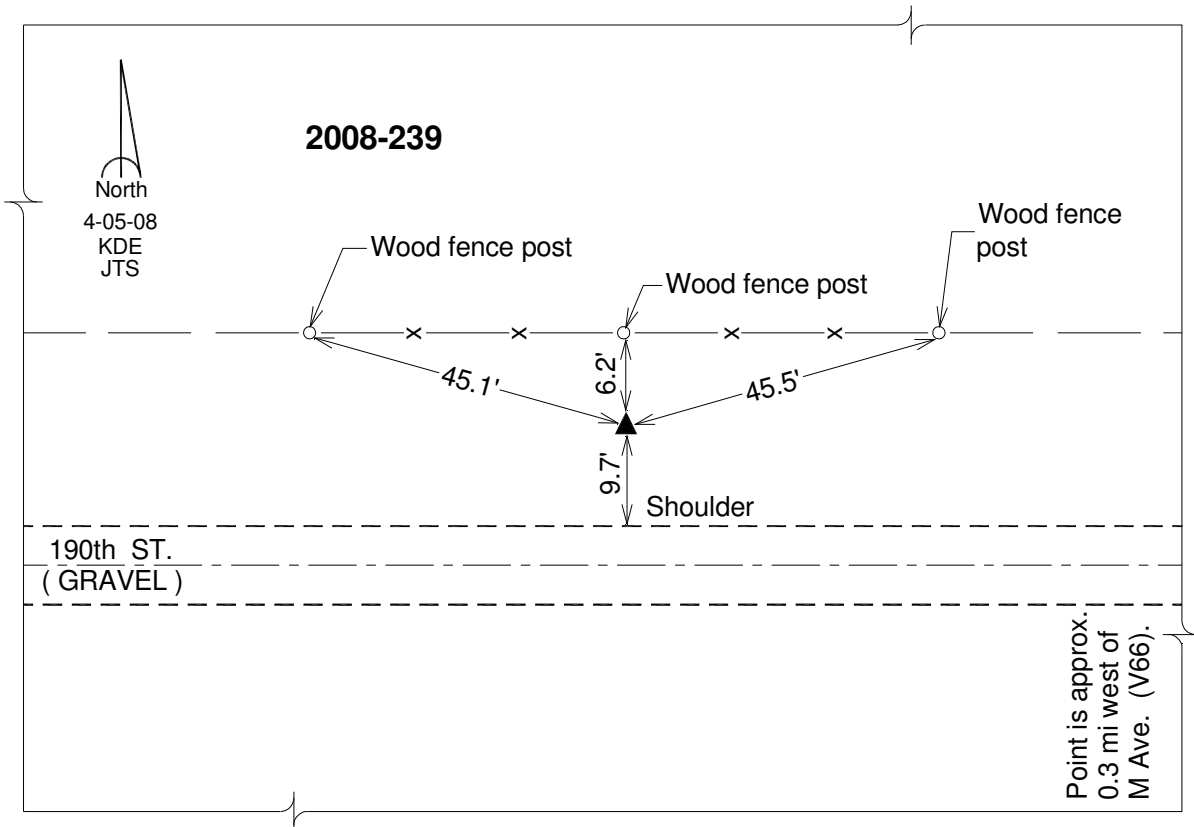
Latitude: **41°43'52.94311"N**

Longitude: **92°04'16.29959"W**

Mapping Angle: **0°56'28"**

Combination Scale Factor: **0.99995394**

Monument Type: Berntsen 3/4" Top Security Rod Monument with a 2-1/2" dia. domed survey cap and permanent magnet encased in a white PVC pipe with a NGS style alum. access cover.



This document was prepared by DCI and GBC for use by Iowa County, Iowa.