

**Iowa County, Iowa**  
 Iowa South Zone (1402)  
 Horiz. Datum: NAD83(NSRS2007)  
 Vert. Datum: NAVD 1988  
 US Survey Feet  
**2008**

Point Name: **4240**

**Designation:** 2008-240 Iowa Co GPS Control Pt

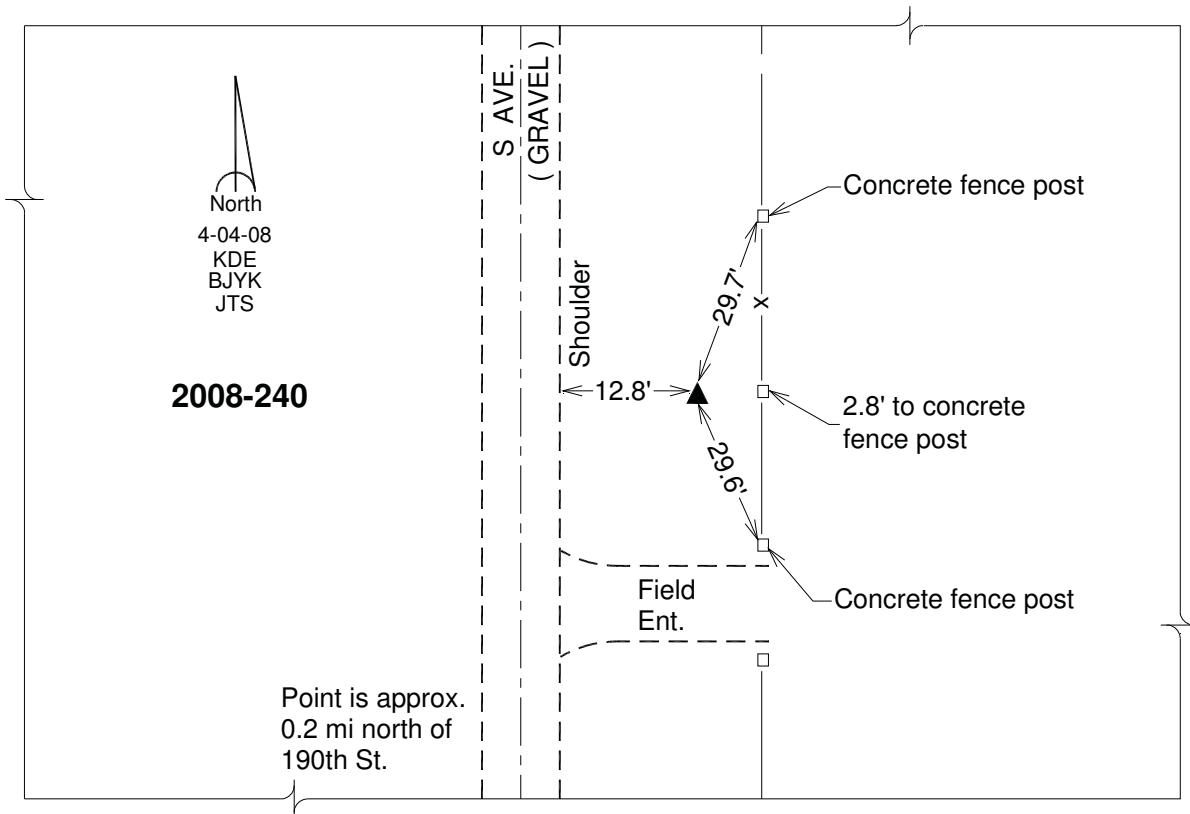
Northing: **634862.34sft**    Easting: **2063800.22sft**

Orthometric Height: **838.40sft**    Ellipsoid Height: **732.65sft**    **Geoid03**

Latitude: **41°43'55.66099"N**                      Longitude: **91°56'55.68718"W**

Mapping Angle: **1°01'18"**                      Combination Scale Factor: **0.99995635**

**Monument Type:** Berntsen 3/4" Top Security Rod Monument with a 2-1/2" dia. domed survey cap and permanent magnet encased in a white PVC pipe with a NGS style alum. access cover.



*This document was prepared by DCI and GBC for use by Iowa County, Iowa.*