

**Iowa County, Iowa**  
 Iowa South Zone (1402)  
 Horiz. Datum: NAD83(NSRS2007)  
 Vert. Datum: NAVD 1988  
 US Survey Feet  
**2008**

Point Name: **4244**

**Designation:** 2008-244 Iowa Co GPS Control Pt

Northing: **619703.50**sft    Easting: **2016265.44**sft

Orthometric Height: **870.04**sft    Ellipsoid Height: **764.49**sft    **Geoid03**

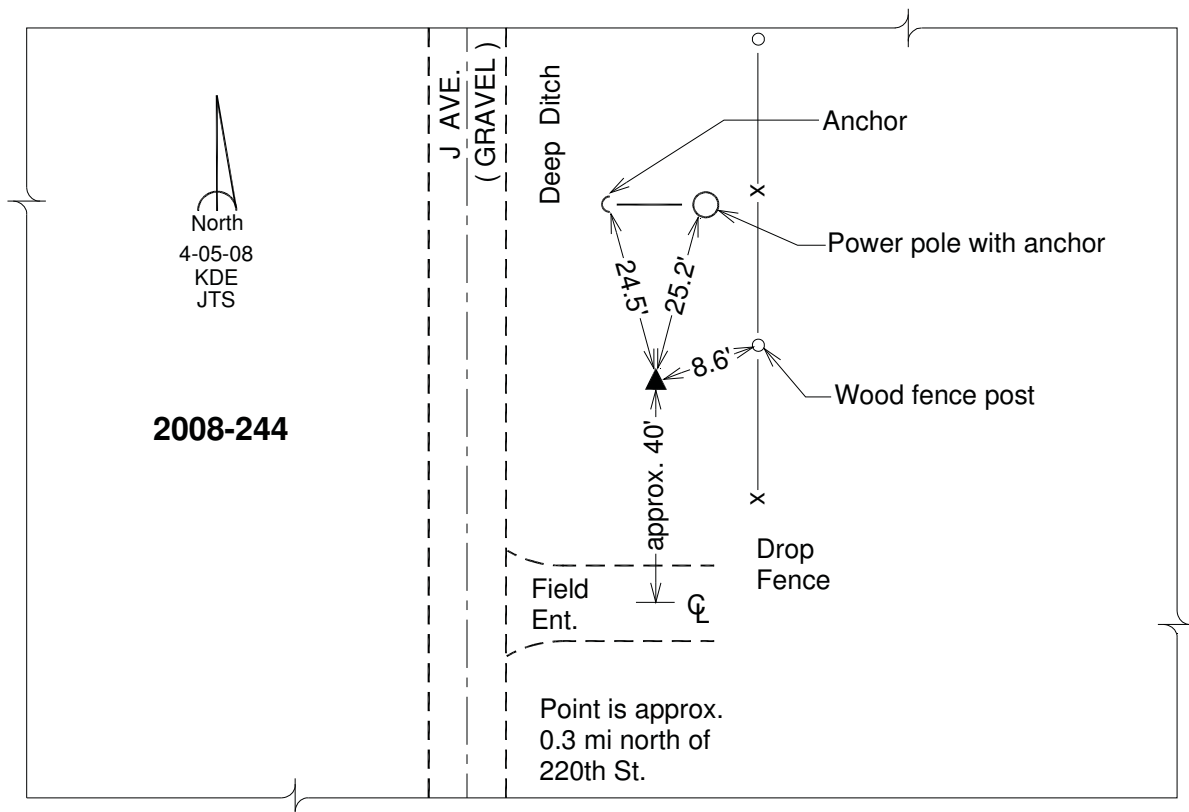
Latitude: **41°41'33.82217"N**

Longitude: **92°07'25.70959"W**

Mapping Angle: **0°54'23"**

Combination Scale Factor: **0.99994869**

**Monument Type:** Berntsen 3/4" Top Security Rod Monument with a 2-1/2" dia. domed survey cap and permanent magnet encased in a white PVC pipe with a NGS style alum. access cover.



*This document was prepared by DCI and GBC for use by Iowa County, Iowa.*